



EC DECLARATION OF CONFORMITY

WE:

POLAR TOOLS A/S
Soldalen 9, DK-7100 Vejle, Denmark

Declare in sole responsibility that the equipment

EQUIPMENT: ANGLE GRINDER

MODEL/SERIAL NO.: 6120-0125

to which this declaration applies, complies with these normative documents:

MACHINERY DIRECTIVE: 2006/42/EC

and conforms to the following EN standards,

EN ISO 12100:2010
EN ISO 11148-6:2010

Authorized representative established within the EU (if applicable):

Company Name: Polar Tools A/S

Company Address: Soldalen 9, DK-7100 Vejle, Denmark

Person responsible for compiling the technical file established within the EU:

Name, Surname: Mikael Linde

Address: Jens Grøns Vej 1, DK-7100 Vejle, Denmark

Note: This declaration becomes invalid, if technical or operational modifications are introduced without the manufacturers consent.

Name and Signature/Position Title

Date and place

Mikael Linde, Owner

Denmark, January 10, 2013



Read the operator's instructions before operating the tool.



Wear eye protection device.



Wear ear protection device.

OPERATING INSTRUCTIONS



IMPORTANT

Read these instructions carefully before installing, operating, servicing or repairing this tool. Keep these instructions in a safe accessible place.

MANUFACTURER/SUPPLIER

Polar Tools A/S
Soldalen 9 · DK-7100 Vejle · Denmark
Tel: +45 7584 1122
E-mail: info@polartools.com · www.polartools.com

PRODUCT TYPE
5" ANGLE GRINDER

MODEL
6120-0125



Actual product may be slightly different from the product described here in.

SAFETY RULES

Read, understand and keep these instructions!



WARNING

Failure to follow all instructions listed below may result in serious injury.

WORK AREA HAZARD & PERSONAL SAFETY

1. Keep your work area clean and well lit.
2. Do not operate power tools in explosive atmospheres, such as in the presence of combustible liquid, gases or dust. Power tools create sparks which may ignite the dust or fumes.
3. Disconnect tool before performing service or when not in use.
4. High sound levels can cause permanent hearing loss. Use hearing protection during operation.
5. Maintain a balanced body position and secure footing.
6. Slips/Trips/Falls are a major cause of serious injury or death. Be aware of excess hose left on the working floor.
7. Repetitive work motions, awkward positions and exposure to vibration can be harmful to hands and arms. If numbness, tingling, pain or whitening of the skin occurs, stop using the tool and consult a physician.

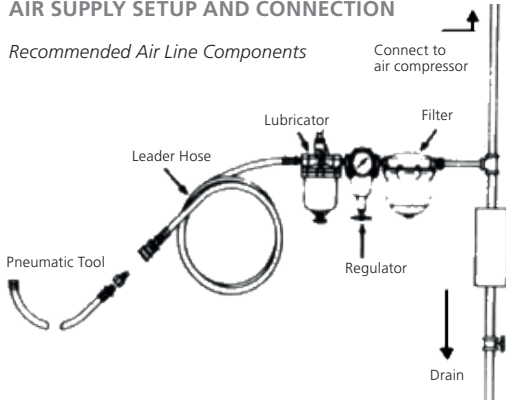
8. Always wear impact-resistant eye and face protection when operating, repairing or performing maintenance of the tool or while changing tool accessories.

TOOL USE AND CARE

1. Use support handle or other method to secure and support the work piece to a stable platform.
2. Do not force the tool. Use the correct tool for your application. Using the correct tool which is specifically designed for a select job will provide better tool performance and make the job easier.
3. Disconnect the air supply before making any adjustments, changing accessories, or storing the tool. Always disconnect the air supply before performing any inspection, maintenance or tool cleaning.
4. Use only accessories recommended by the manufacturer for your model.
5. When using a tool that is designed to have a guard, the guard should be in place to provide protection from flying debris, grinding residue or sparks.
6. Do not leave the tool unattended when it is connected to an air supply.
7. Use compressed air only.

AIR SUPPLY SETUP AND CONNECTION

Recommended Air Line Components



1. For optimal results you should incorporate a regulator, oiler and an inline filter.
2. If you are not using an automatic lubricating system, before operating the tool, add a few drops of Pneumatic Tool Oil to the air-line connection. Add more after each hour of constant using.
3. Do not exceed maximum air pressure of 90 PSI/ 6,2 bar or as stated on tool nameplate.

LUBRICATION & MAINTENANCE

Lubricate the tool daily with a high grade of air tool oil. If no air line oiler is used, run a teaspoon of oil through the tool.

The oil can be squirted into the tool air inlet, or into the hose at the nearest connection to the air supply, prior to operating the tool.

A rust inhibitive oil is acceptable for air tools.

OPERATING INSTRUCTIONS

ONLY use accessories recommended by Polar Tools. Check the position of the reversing mechanism before operating the tool so as to be aware of the direction of rotation when operating.

Before using an Angle Grinder, during use or installing a new grinding/cutting disc.

Inspect the discs for chips and cracks.

Grinding discs with flaws, can explode whilst rotating. Replace discs when worn.

Always handle both the Angle Grinder and individual grinding discs carefully to avoid damage.

GRINDING/CUTTING DISC ASSEMBLY:

1. Discount the Angle Grinder from the air supply
2. To hold the spindle in place, depress the spindle lock button and rotate the spindle until the spindle lock locates and the spindle will not move.
3. Remove the outer flange nut and ensure that the inner flange is screwed-up hand-tight against the head of the Angle Grinder.

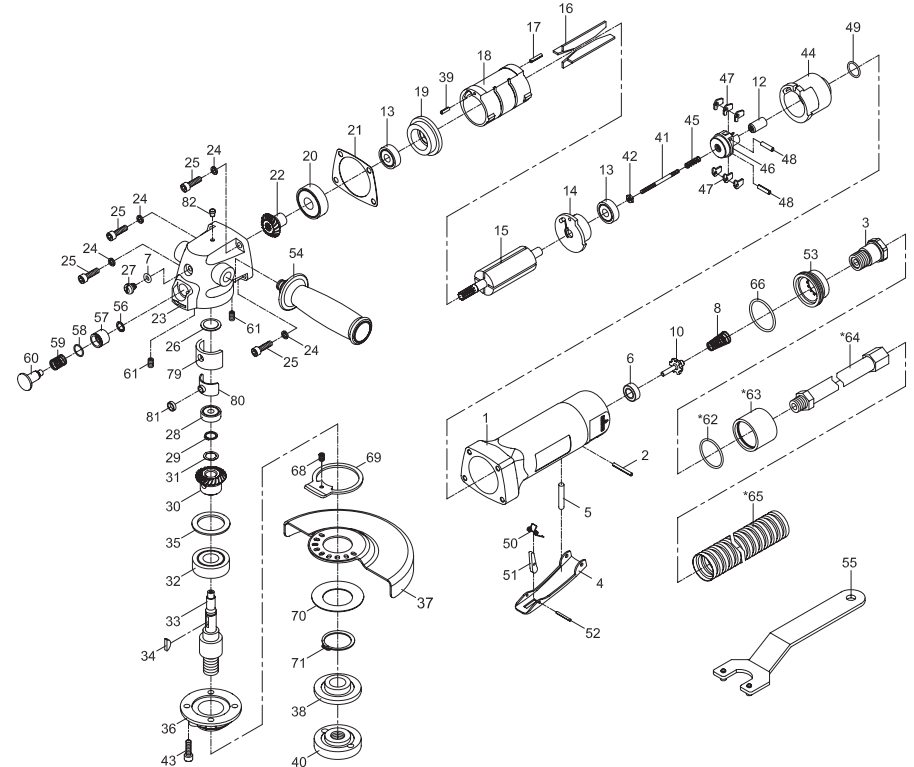
4. Position the flange nut depending on the thickness of the disc over the spindle and disc and hand-tighten.
5. Locate the pin wrench into the two holes on the flange nut and hand-tighten further.

DISC GUARD ADJUSTMENT:

1. Discount the Angle Grinder from the air supply.
2. Lift up the lock ring and rotate the disc guard to the desired position.
3. Let go of the lock ring and ensure it has located correctly by attempting to turn the disc guard. Never remove the disc cover completely.

PARTS NO.	DESCRIPTION
P6120-0125-01	Motor Housing
P6120-0125-02	Spring Pin (3 x 24)
P6120-0125-03	Air Inlet
P6120-0125-04	Throttle Lever
P6120-0125-05	Pin
P6120-0125-06	Rubber Spacer
P6120-0125-07	O-Ring (4,9 x 2,2) ●
P6120-0125-08	Spring
P6120-0125-10	Valve Stem
P6120-0125-12	Plunger
P6120-0125-13	Ball Bearing (2) (608zz)
P6120-0125-14	Rear Plate
P6120-0125-15	Rotor
P6120-0125-16	Rotor Blade (4) ●
P6120-0125-17	Spring Pin (2,5 x 12)
P6120-0125-18	Cylinder
P6120-0125-19	Front End Plate
P6120-0125-20	Ball Bearing (6201z)
P6120-0125-21	Gasket ●
P6120-0125-22	Bevel Gear
P6120-0125-23	Gear Housing
P6120-0125-24	Spring Washer (4) (M5)
P6120-0125-25	Screw (4) (M65 x 18)
P6120-0125-26	Spacer
P6120-0125-27	Screw (M6 x 10)
P6120-0125-28	Ball Bearing (626zz)
P6120-0125-29	Retaining Ring (STW-10)
P6120-0125-30	Bevel Gear
P6120-0125-31	Wave Washer (WW-10)
P6120-0125-32	Ball Bearing (6202zz)
P6120-0125-33	Spindle (M14 x 2)
P6120-0125-34	Key (3 x 13)
P6120-0125-35	Spacer
P6120-0125-36	Bearing Cap
P6120-0125-37	Disc Cover
P6120-0125-38	Flange (M14)
P6120-0125-39	Spring Pin (2,5 x 8)
P6120-0125-40	Flange Nut (M14 x 2)
P6120-0125-41	Adjust Screw
P6120-0125-42	Adjust Nut
P6120-0125-43	Screw (4) (M5 x 16)
P6120-0125-44	Inlet Guide
P6120-0125-45	Spring
P6120-0125-46	Governor

5" ANGLE GRINDER



P6120-0125-47	Pendulum (6)	P6120-0125-57	Bushing ●	P6120-0125-68	Spring ●
P6120-0125-48	Spring Pin (2) (3 x 12)	P6120-0125-58	O-Ring (10,5 x 1) ●	P6120-0125-69	Lock Ring
P6120-0125-49	O-Ring (13,5 x 1,5) ●	P6120-0125-59	Spring	P6120-0125-70	Disk Spring
P6120-0125-50	Spring	P6120-0125-60	Spindle Stop Button	P6120-0125-71	Retaining Ring (STW-27)
P6120-0125-51	Safety Bar	P6120-0125-61	Set Screw (2) (M5 x 8)	P6120-0125-79	Felt Oiler
P6120-0125-52	Spring Pin (2 x 18)	P6120-0125-62*	O-Ring (27 x 2)	P6120-0125-80	Steady
P6120-0125-53	Exhaust Diffuser	P6120-0125-63*	Clamp	P6120-0125-81	Washer
P6120-0125-54	Dead Handle	P6120-0125-64*	Hose	P6120-0125-82	Oil Cap (1/8")
P6120-0125-55	Pin Wrench	P6120-0125-65*	Exhaust Hose	P6120-0125-90	● Service Kit
P6120-0125-56	Retaining Ring (ISTW7) ●	P6120-0125-66	O-Ring ●		* Optional Parts

TECHNICAL SPECIFICATION

PRODUCT TYPE		MODEL: 6120-0125
5" Angle Grinder		
FREE SPEED: 12.000 RPM	AIR INLET: 1/4" NPT	AVERAGE AIR CONSUMPTION: 113 L/Min (4 CFM)
DISC SIZE: 5" (125 mm)	HOSE SIZE: 3/8" (10 mm)	WEIGHT: 2 Kg
SPINDLE SIZE: M14 x 2,0	AIR PRESSURE: 6,2 Bar (90 P.S.I.)	