



EC DECLARATION OF CONFORMITY

WE:

POLAR TOOLS A/S
Soldalen 9, DK-7100 Vejle, Denmark

Declare in sole responsibility that the equipment

EQUIPMENT: LONG ANGLE GRINDER

MODEL/SERIAL NO.: 6125-0100

to which this declaration applies, complies with these normative documents:

MACHINERY DIRECTIVE: 2006/42/EC

and conforms to the following EN standards,

EN ISO 12100:2010
EN ISO 11148-6:2010

Authorized representative established within the EU(if applicable):

Company Name: Polar Tools A/S

Company Address: Soldalen 9, DK-7100 Vejle, Denmark

Person responsible for compiling the technical file established within the EU:

Name, Surname: Mikael Linde

Address: Jens Grøns Vej 1, DK-7100 Vejle, Denmark

Note: This declaration becomes invalid, if technical or operational modifications are introduced without the manufacturers consent.

Name and Signature/Position Title

Date and place

Mikael Linde, Owner

Denmark, January 10, 2013



Read the operator's instructions before operating the tool.



Wear eye protection device.



Wear ear protection device.

OPERATING INSTRUCTIONS



IMPORTANT

Read these instructions carefully before installing, operating, servicing or repairing this tool. Keep these instructions in a safe accessible place.

MANUFACTURER/SUPPLIER

Polar Tools A/S
Soldalen 9 · DK-7100 Vejle · Denmark
Tel: +45 7584 1122
E-mail: info@polartools.com · www.polartools.com

PRODUCT TYPE
LONG ANGLE GRINDER
4" CUT-OFF TOOL

MODEL
6125-0100



Actual product may be slightly different from the product described here in.

SAFETY RULES

Read, understand and keep these instructions!



WARNING

Failure to follow all instructions listed below may result in serious injury.

WORK AREA HAZARD & PERSONAL SAFETY

1. Keep your work area clean and well lit.
2. Do not operate power tools in explosive atmospheres, such as in the presence of combustible liquid, gases or dust. Power tools create sparks which may ignite the dust or fumes.
3. Disconnect tool before performing service or when not in use.
4. High sound levels can cause permanent hearing loss. Use hearing protection during operation.
5. Maintain a balanced body position and secure footing.
6. Slips/Trips/Falls are a major cause of serious injury or death. Be aware of excess hose left on the working floor.
7. Repetitive work motions, awkward positions and exposure to vibration can be harmful to hands and arms. If numbness, tingling, pain or whitening of the skin occurs, stop using the tool and consult a physician.

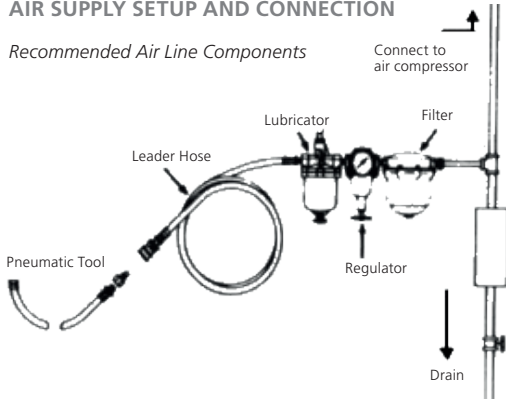
8. Always wear impact-resistant eye and face protection when operating, repairing or performing maintenance of the tool or while changing tool accessories.

TOOL USE AND CARE

1. Use support handle or other method to secure and support the work piece to a stable platform.
2. Do not force the tool. Use the correct tool for your application. Using the correct tool which is specifically designed for a select job will provide better tool performance and make the job easier.
3. Disconnect the air supply before making any adjustments, changing accessories, or storing the tool. Always disconnect the air supply before performing any inspection, maintenance or tool cleaning.
4. Use only accessories recommended by the manufacturer for your model.
5. When using a tool that is designed to have a guard, the guard should be in place to provide protection from flying debris, grinding residue or sparks.
6. Do not leave the tool unattended when it is connected to an air supply.
7. Use compressed air only.

AIR SUPPLY SETUP AND CONNECTION

Recommended Air Line Components



1. For optimal results you should incorporate a regulator, oiler and an inline filter.
2. If you are not using an automatic lubricating system, before operating the tool, add a few drops of Pneumatic Tool Oil to the air-line connection. Add more after each hour of constant using.
3. Do not exceed maximum air pressure of 90 PSI/ 6,2 bar or as stated on tool nameplate.

LUBRICATION & MAINTENANCE

Lubricate the tool daily with a high grade of air tool oil. If no air line oiler is used, run a teaspoon of oil through the tool.

The oil can be squirted into the tool air inlet, or into the hose at the nearest connection to the air supply, prior to operating the tool.

A rust inhibitive oil is acceptable for air tools.

OPERATING INSTRUCTIONS

ONLY use accessories recommended by Polar Tools. Check the position of the reversing mechanism before operating the tool so as to be aware of the direction of rotation when operating.

Before using an Angle Grinder, during use or installing a new grinding/cutting disc.

Inspect the discs for chips and cracks.

Grinding discs with flaws, can explode whilst rotating. Replace discs when worn.

Always handle both the Angle Grinder and individual grinding discs carefully to avoid damage.

GRINDING/CUTTING DISC ASSEMBLY:

1. Discount the Angle Grinder from the air supply
2. To hold the spindle in place, depress the spindle lock button and rotate the spindle until the spindle lock locates and the spindle will not move.
3. Remove the outer flange nut and ensure that the inner flange is screwed-up hand-tight against the head of the Angle Grinder.

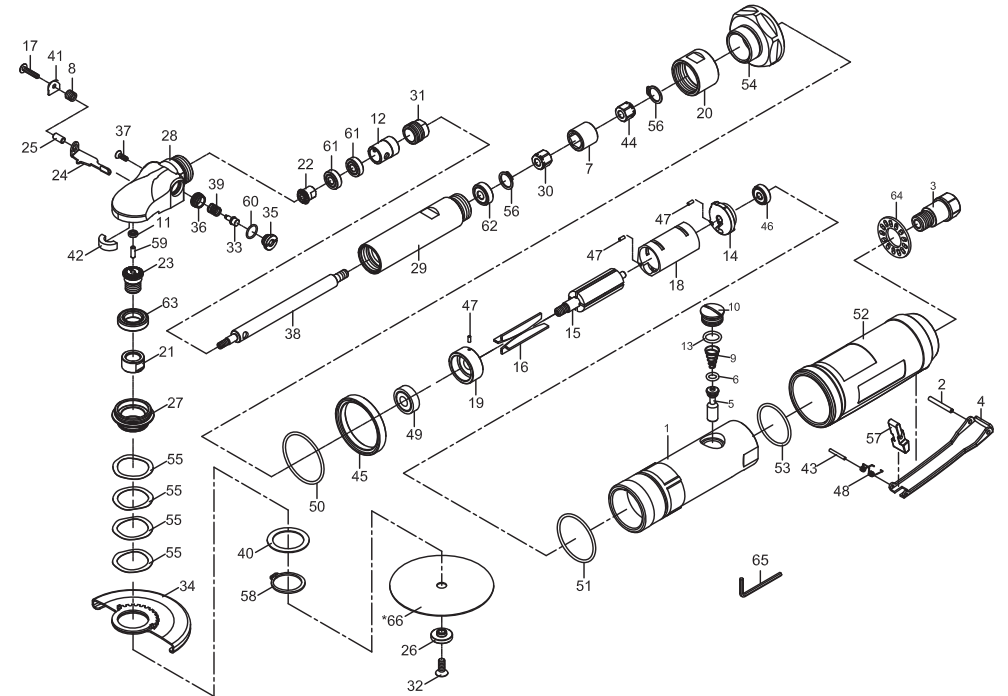
4. Position the flange nut depending on the thickness of the disc over the spindle and disc and hand-tighten.
5. Locate the pin wrench into the two holes on the flange nut and hand-tighten further.

DISC GUARD ADJUSTMENT:

1. Discount the Angle Grinder from the air supply.
2. Lift up the lock ring and rotate the disc guard to the desired position.
3. Let go of the lock ring and ensure it has located correctly by attempting to turn the disc guard. Never remove the disc cover completely.

PARTS NO.	DESCRIPTION
P6125-0100-01	Motor Housing
P6125-0100-02	Spring Pin (3 x 24L)
P6125-0100-03	Air Inlet
P6125-0100-04	Throttle Lever
P6125-0100-05	Valve Shaft
P6125-0100-06	O-Ring (4,8 x 1,9) ●
P6125-0100-07	Connector ○
P6125-0100-08	Spring
P6125-0100-10	Valve Spring
P6125-0100-11	Ball Bearing ○
P6125-0100-12	Bushing
P6125-0100-13	O-Ring (11,8 x 2,4) ●
P6125-0100-14	Rear End Plate
P6125-0100-15	Rotor
P6125-0100-16	Rotor Blade (4) ●
P6125-0100-17	Screw (M4 x 20L)
P6125-0100-18	Cylinder
P6125-0100-19	Front End Plate
P6125-0100-20	Connector Nut
P6125-0100-21	Flange
P6125-0100-22	Bevel Gear ○
P6125-0100-23	Bevel Gear ○
P6125-0100-24	Lock Bar
P6125-0100-25	Bushing
P6125-0100-26	Flange Nut
P6125-0100-27	Lock Nut
P6125-0100-28	Front Housing
P6125-0100-29	Connector Pipe
P6125-0100-30	Nut ○
P6125-0100-31	Lock Nut
P6125-0100-32	Screw (M6 x 16L)
P6125-0100-33	Stop Button
P6125-0100-34	Disc Cover
P6125-0100-35	Button Seat
P6125-0100-36	Nut
P6125-0100-37	Screw (M4 x 12L)
P6125-0100-38	Roller Shaft

LONG ANGLE GRINDER 4" CUT-OFF TOOL



P6125-0100-39	Spring	P6125-0100-49	Ball Bearing (6000ZZ) ○	P6125-0100-59	Pin (STW-30) ●
P6125-0100-40	Washer	P6125-0100-50	O-Ring (40 x 2)	P6125-0100-60	O-Ring (11,4 x 1,25)
P6125-0100-41	Washer	P6125-0100-51	O-Ring (35,5 x 2)	P6125-0100-61	Ball Bearing (2) (698ZZ)
P6125-0100-42	Oil Felt ●	P6125-0100-52	Grip	P6125-0100-62	Ball Bearing (608ZZ)
P6125-0100-43	Spring Pin (∅2 x 18L)	P6125-0100-53	O-Ring (31,5 x 2)	P6125-0100-63	Ball Bearing (6903ZZ) ○
P6125-0100-44	Nut ○	P6125-0100-54	Clamp Nut	P6125-0100-64	Diffuser
P6125-0100-45	Decoration Ring	P6125-0100-55	Wave Washers (4) (WW-30)	P6125-0100-65	Hex. Key. Wrench (4 mm)
P6125-0100-46	Ball Bearing (626ZZ) ○	P6125-0100-56	Retaining Ring (2) (STW-15)	P6125-0100-66*	Cutting Wheel (4")
P6125-0100-47	Spring Pin (∅ 2,5 x 6L)	P6125-0100-57	Safety Bar	P6125-0100-70	● Service Kit
P6125-0100-48	Spring	P6125-0100-58	Retaining Ring (STW-30)	P6125-0100-71	○ Rebuilt Kit

* Optional Parts

TECHNICAL SPECIFICATION

PRODUCT TYPE		MODEL: 6125-0100
Long Angle Grinder - 4" Cut-off Tool		
FREE SPEED: 14.000 RPM	HOSE SIZE: 3/8" (10 mm)	WEIGHT: 1,7 Kg
DISC SIZE: 4"(100 mm)	AIR PRESSURE: 6,2 Bar (90 P.S.I.)	
AIR INLET: 1/4" NPT	AVERAGE AIR CONSUMPTION: 113 L/Min (4 CFM)	