



EC DECLARATION OF CONFORMITY

WE:

POLAR TOOLS A/S
Soldalen 9, DK-7100 Vejle, Denmark

Declare in sole responsibility that the equipment

EQUIPMENT: BELTSANDER

MODEL/SERIAL NO.: 6145-0010

to which this declaration applies, complies with these normative documents:

MACHINERY DIRECTIVE: 2006/42/EC

and conforms to the following EN standards,

EN ISO 12100:2010
EN ISO 11148-6:2012

Authorized representative established within the EU (if applicable):

Company Name: Polar Tools A/S

Company Address: Soldalen 9, DK-7100 Vejle, Denmark

Person responsible for compiling the technical file established within the EU:

Name, Surname: Mikael Linde

Address: Jens Grøns Vej 1, DK-7100 Vejle, Denmark

Note: This declaration becomes invalid, if technical or operational modifications are introduced without the manufacturers consent.

Name and Signature/Position Title

Date and place

Mikael Linde, Owner

Denmark, March 15, 2016



Read the operator's instructions before operating the tool.



Wear eye protection device.



Wear ear protection device.

OPERATING INSTRUCTIONS



IMPORTANT

Read these instructions carefully before installing, operating, servicing or repairing this tool. Keep these instructions in a safe accessible place.

MANUFACTURER/SUPPLIER

Polar Tools A/S
Soldalen 9 · DK-7100 Vejle · Denmark
Tel: +45 7584 1122
E-mail: info@polartools.com · www.polartools.com

PRODUCT TYPE
BELTSANDER 10 MM

MODEL
6145-0010



Actual product may be slightly different from the product described here in.

SAFETY RULES

Read, understand and keep these instructions!



WARNING

Failure to follow all instructions listed below may result in serious injury.

WORK AREA HAZARD & PERSONAL SAFETY

1. Keep your work area clean and well lit.
2. Do not operate power tools in explosive atmospheres, such as in the presence of combustible liquid, gases or dust. Power tools create sparks which may ignite the dust or fumes.
3. Disconnect tool before performing service or when not in use.
4. High sound levels can cause permanent hearing loss. Use hearing protection during operation.
5. Maintain a balanced body position and secure footing.
6. Slips/Trips/Falls are a major cause of serious injury or death. Be aware of excess hose left on the working floor.
7. Repetitive work motions, awkward positions and exposure to vibration can be harmful to hands and arms. If numbness, tingling, pain or whitening of the skin occurs, stop using the tool and consult a physician.

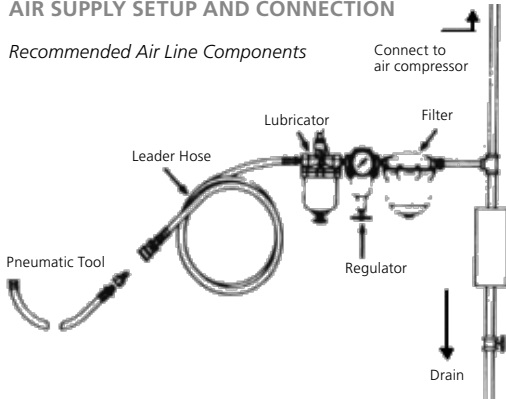
8. Always wear impact-resistant eye and face protection when operating, repairing or performing maintenance of the tool or while changing tool accessories.

TOOL USE AND CARE

1. Use support handle or other method to secure and support the work piece to a stable platform.
2. Do not force the tool. Use the correct tool for your application. Using the correct tool which is specifically designed for a select job will provide better tool performance and make the job easier.
3. Disconnect the air supply before making any adjustments, changing accessories, or storing the tool. Always disconnect the air supply before performing any inspection, maintenance or tool cleaning.
4. Use only accessories recommended by the manufacturer for your model.
5. When using a tool that is designed to have a guard, the guard should be in place to provide protection from flying debris, grinding swarf or sparks.
6. Do not leave the tool unattended when it is connected to an air supply.
7. Use compressed air only.

AIR SUPPLY SETUP AND CONNECTION

Recommended Air Line Components



1. For optimal results you should incorporate a regulator, oiler and an inline filter.
2. If you are not using an automatic lubricating system, before operating the tool, add a few drops of Pneumatic Tool Oil to the air-line connection. Add more after each hour of constant using.
3. Do not exceed maximum air pressure of 90 PSI/ 6,2 bar or as stated on tool nameplate.

LUBRICATION & MAINTENANCE

Lubricate the tool daily with a high grade of air tool oil. If no air line oiler is used, run a teaspoon of oil through the tool.

The oil can be squirted into the tool air inlet, or into the hose at the nearest connection to the air supply, prior to operating the tool.

A rust inhibitive oil is acceptable for air tools.

OPERATING INSTRUCTIONS

ONLY use accessories recommended by Polar Tools. Check the position of the reversing mechanism before operating the tool so as to be aware of the direction of rotation when operating.

Adjusting the Angle of the arm, make sure as below:

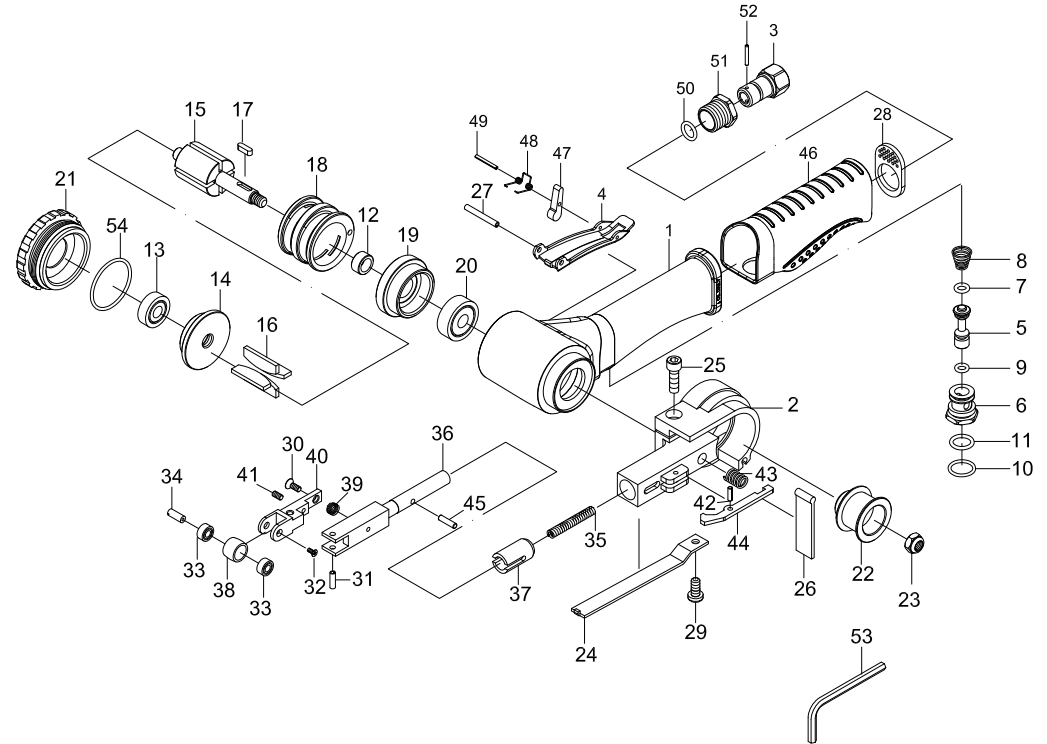
1. Disconnect the Mini Belt sander from the air supply
2. Loosen but do not remove the screw between the main body and sanding arm, using the Hex key which a provided.
3. Rotate the sanding arm to the desired angle.
4. Tighten the screw making sure that the sanding arm is flush against the main body.

PARTS NO.

PARTS NO.	DESCRIPTION
P6145-0010-01	Motor Housing
P6145-0010-02	Guard
P6145-0010-03	Air inlet
P6145-0010-04	Throttle Lever
P6145-0010-05	Valve Stem
P6145-0010-06	Valve
P6145-0010-07	O-Ring (4.8 x 1.9) ●
P6145-0010-08	Spring
P6145-0010-09	O-Ring (4.47 x 1.78) ●
P6145-0010-10	O-Ring (12 x 1.6)
P6145-0010-11	O-Ring (9.8 x 1.9) ●
P6145-0010-12	Spacer
P6145-0010-13	Ball Bearing (607zz)
P6145-0010-14	Rear End Plate
P6145-0010-15	Rotor
P6145-0010-16	Rotor Blade (4) ●
P6145-0010-17	Key (3 x 3 x 10)
P6145-0010-18	Cylinder
P6145-0010-19	Front End Plate
P6145-0010-20	Ball Bearing (628zz)
P6145-0010-21	Cap
P6145-0010-22	Drive Pulley
P6145-0010-23	Hexagon Nut (M6)
P6145-0010-24	Shoe
P6145-0010-25	Screw (M5 x 16)
P6145-0010-26	Dust Cover ●
P6145-0010-27	Spring Pin (3 x 24)
P6145-0010-28	Exhaust Deflector
P6145-0010-29	Screw (M4 x 8)
P6145-0010-30	Screw (M3 x 8) ○
P6145-0010-31	Spring Pin (3 x 10) ○
P6145-0010-32	Screw (M2 x 5) ○
P6145-0010-33	Ball Bearing (2) - (684zz) ○
P6145-0010-34	Idle Pulley Shaft ○
P6145-0010-35	Spring
P6145-0010-36	Tension Bar
P6145-0010-37	Bushing
P6145-0010-38	Idle Pulley ○
P6145-0010-39	Spring ○
P6145-0010-40	Bracket ○
P6145-0010-41	Screw (M3 x 6) ○
P6145-0010-42	Spring Pin
P6145-0010-43	Spring
P6145-0010-44	Safety Lever
P6145-0010-45	Lock Pin
P6145-0010-46	Grip
P6145-0010-47	Safety Bar
P6145-0010-48	Spring
P6145-0010-49	Spring Pin (2 x 16L)
P6145-0010-50	O-Ring (9 x 2)
P6145-0010-51	Screw
P6145-0010-52	Pin (2 x 14.8)
P6145-0010-53	Hex. Key Wrench (4 mm)
P6145-0010-54	O-Ring (33.5 x 2)

- P6145-0010-60 ● Service Kit
P6145-0010-61 ○ Rebuilt Kit

BELTSANDER 10 MM



TECHNICAL SPECIFICATION

PRODUCT TYPE		MODEL: 6145-0010	
Belt Sander			
FREE SPEED	20.000 RPM	HOSE SIZE: 3/8" (10 mm)	WEIGHT: 0,9 Kg
BELT SIZE: 3/8" x 13" (10 x 330 mm)	AIR PRESSURE: 6,2 Bar (90 P.S.I.)	LENGTH: 305 mm	
AIR INLET: 1/4" NPT	AVERAGE AIR CONSUMPTION:	110 L/Min (3.9 CFM)	