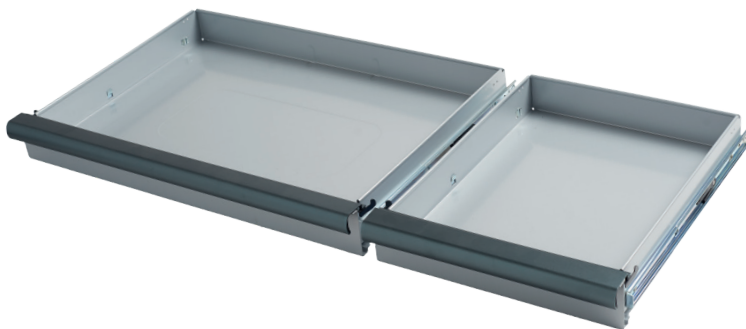


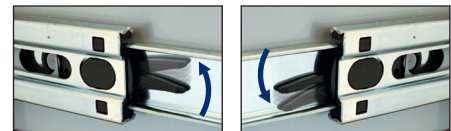
INSTALLATION INSTRUCTIONS

HOW TO INSTALL DRAWERS IN **MINI AND CARGO**



1. OPEN THE DRAWER COMPLETELY.

2. SIMULTANEOUSLY PUSH THE RELEASE LEVERS ON THE BALL BEARING SLIDES: LEFT GOES UP - RIGHT GOES DOWN.



3. PULL THE DRAWER OUT.



4. REPLACE THE DRAWER:
MAKE SURE THAT SLIDES ARE 100% EXTRACTED.
CAREFULLY INSERT THE DRAWER SLIDES.



5. IMPORTANT: MAKE SURE THE BALL BEARINGS STAYS IN THE SLIDES.

6. PUSH UNTIL YOU HEAR THE CLICK INDICATING THAT THE SLIDES HAVE RE-ENGAGED.

