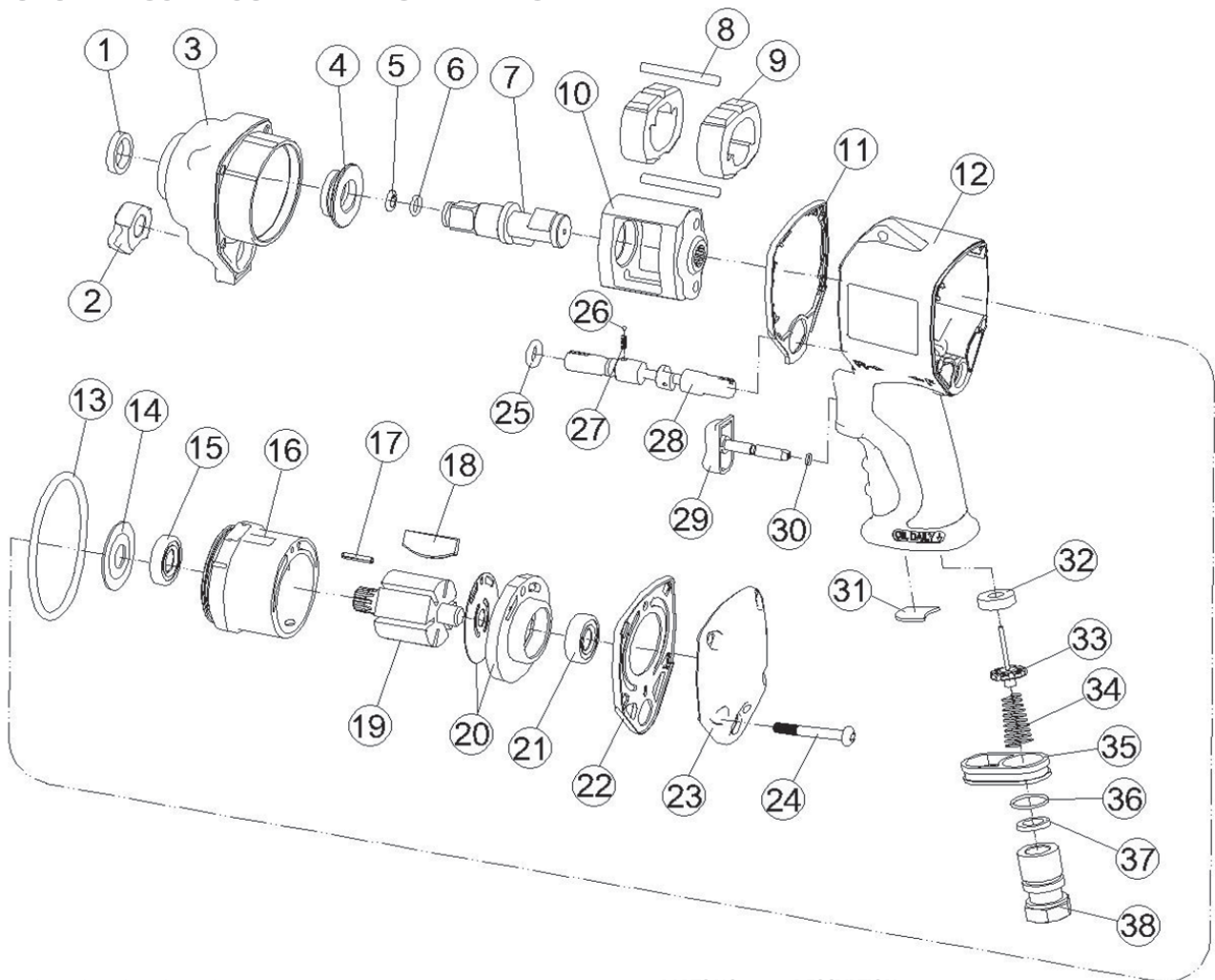




1/2" STUBBY COMPOSITE IMPACT WRENCH



TECHNICAL SPECIFICATION

PRODUCT TYPE 1/2" stubby professional composite impact wrench	
MODEL: 6100-0012	VIBRATION LEVEL: 9.69 m/sec ²
RPM (R/MIN): 9000 ± 10%	MEASUREMENT UNCERTAINTY: K = 1.5 m/sec ²
WEIGHT: 1.30 kg 2.87 lbs	Tested in accordance with EN ISO 28927-2
AIR PRESSURE: 6.3 bar (90 PSI)	OTHER DATA:
RECOMMENDED MAXIMUM HOSE LENGTH: 30 ft / 10 m	AIR INLET 1/4" (6.3 mm)
RECOMMENDED MINIMUM HOSE BORE DIAMETER: 3/8" / 10 mm	BOLT CAPACITY 1/2" 13 mm
NOISE LEVEL:	TORQUE 450 ft. lb 62 kg/m 610 Nm
SOUND PRESSURE LEVEL LOAD NO LOAD 94.2 89.1 dB(A)	AVERAGE AIR CONSUMPTION 120 L/min. (4.2 cfm)
SOUND POWER LEVEL 105.2 100.1 dB(A)	OVERALL LENGTH 4.81" (122 mm)
MEASUREMENT UNCERTAINTY: K = 3dB	OVERALL WIDTH 2.52" (64 mm)
Tested in accordance with EN ISO 15744	OVERALL HEIGHT 7.80" (198 mm)
RECOMMENDED PERSONAL SAFETY EQUIPMENT	SQUARE DRIVE 1/2"
	CLUTCH TYPE Twin hammer
	USE: Safety glasses and ear protectors

PARTS NO.	DESCRIPTION	PARTS NO.	DESCRIPTION
P6100-0012-01	Oil Seal	P6100-0012-27	Spring
P6100-0012-02	Regulator Knob	P6100-0012-28	Reverse Valve
P6100-0012-03	Hammer Case	P6100-0012-29	Trigger
P6100-0012-04	Bushing	P6100-0012-30	O-Ring ●
P6100-2012-38	Anvil Collar	P6100-0012-31	Muffler
P6100-0012-06	O-Ring	P6100-0012-32	Retainer
P6100-0012-07	Anvil (1/2" DR)	P6100-0012-33	Valve Stem
P6100-0012-08	Hammer Pin (2) ○	P6100-0012-34	Spring
P6100-0012-09	Hammer Dog (2)	P6100-0012-35	Exhaust Deflector
P6100-0012-10	Hammer Cage	P6100-0012-36	O-Ring ○
P6100-0012-11	Front Gasket ○	P6100-0012-37	Washer
P6100-0012-12	Motor Housing	P6100-0012-38A	Hose Adaptor -18NPT
P6100-0012-13	O-Ring ●	P6100-0012-40	● Service Kit
P6100-0012-14	Washer	P6100-0012-41	○ Rebuilt Kit
P6100-0012-15	Ball Bearing		
P6100-0012-16	Cylinder		
P6100-0012-17	Spring Pin		
P6100-0012-18	Rotor Blade (6) ●		
P6100-0012-19	Rotor		
P6100-0012-20	Rear Plate		
P6100-0012-21	Ball Bearing		
P6100-0012-22	Rear Gasket ○		
P6100-0012-23	Rear Cover		
P6100-0012-24	Screw (4)		
P6100-0012-25	O-Ring ●		
P6100-0012-26	Steel Ball		

