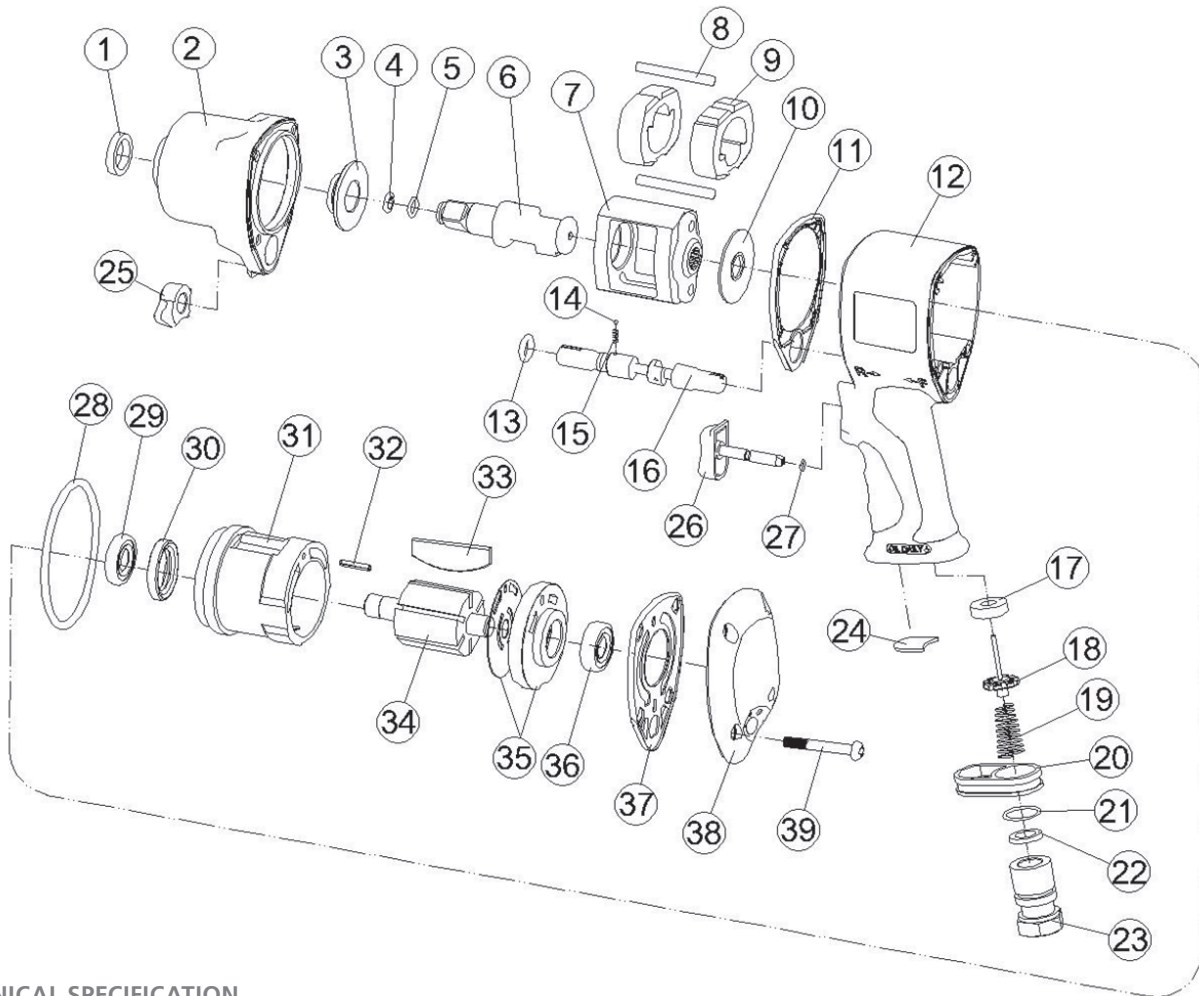




1/2" PROFESSIONAL COMPOSITE IMPACT WRENCH



TECHNICAL SPECIFICATION

PRODUCT TYPE 1/2" professional composite impact wrench	
MODEL: 6100-1012	VIBRATION LEVEL: 9.44 m/sec ²
RPM (R/MIN): 6500 ± 10%	MEASUREMENT UNCERTAINTY: K = 1.5 m/sec ²
WEIGHT: 2.02 kg 4.45 lbs	Tested in accordance with EN ISO 28927-2
AIR PRESSURE: 6.3 bar (90 PSI)	
RECOMMENDED MAXIMUM HOSE LENGTH: 30 ft / 10 m	OTHER DATA:
RECOMMENDED MINIMUM HOSE BORE DIAMETER: 3/8" / 10 mm	AIR INLET 1/4" (6.3 mm) BOLT CAPACITY 5/8" 16 mm
NOISE LEVEL:	TORQUE 900 ft. lb 125 kg/m 1220 Nm
SOUND PRESSURE LEVEL LOAD NO LOAD 96.1 91.6 dB(A)	AVERAGE AIR CONSUMPTION 140 L/min. (4.8 cfm)
SOUND POWER LEVEL 107.1 102.6 dB(A)	OVERALL LENGTH 6.50" (122 mm) OVERALL WIDTH 2.88" (64 mm) OVERALL HEIGHT 8.27" (198 mm) SQUARE DRIVE 1/2" CLUTCH TYPE Twin hammer
MEASUREMENT UNCERTAINTY: K = 3dB Tested in accordance with EN ISO 15744	USE: Safety glasses and ear protectors
RECOMMENDED PERSONAL SAFETY EQUIPMENT	

PARTS NO.	DESCRIPTION	
P6100-1012-01	Oil Seal	P6100-1012-27 O-Ring ●
P6100-1012-02	Hammer Case	P6100-1012-28 O-Ring ●
P6100-1012-03	Bushing	P6100-1012-29 Ball Bearing
P6100-2012-38	Anvil Collar	P6100-1012-30 Oil Seal
P6100-1012-05	O-Ring	P6100-1012-31 Cylinder
P6100-1012-06	Anvil	P6100-1012-32 Spring Pin
P6100-1012-07	Hammer Cage	P6100-1012-33 Rotor Blade (6) ●
P6100-1012-08	Hammer Pin (2) ○	P6100-1012-34 Rotor
P6100-1012-09	Hammer Dog (2)	P6100-1012-35 Rear Plate
P6100-1012-10	Washer	P6100-1012-36 Ball Bearing
P6100-1012-11	Front Gasket ○	P6100-1012-37 Rear Gasket ○
P6100-1012-12	Motor Housing	P6100-1012-38 Rear Cover
P6100-1012-13	O-Ring ●	P6100-1012-39 Screw (4)
P6100-1012-14	Steel Ball	P6100-1012-40 ● Service Kit
P6100-1012-15	Spring	P6100-1012-41 ○ Rebuilt Kit
P6100-1012-16	Reverse Valve	
P6100-1012-17	Retainer	
P6100-1012-18	Valve Stem	
P6100-1012-19	Spring	
P6100-1012-20	Exhaust Deflector	
P6100-1012-21	O-Ring ○	
P6100-1012-22	Washer	
P6100-1012-23A	Hose Adaptor -18NPT	
P6100-1012-24	Muffler	
P6100-1012-25	Regulator Knob	
P6100-1012-26	Trigger	

