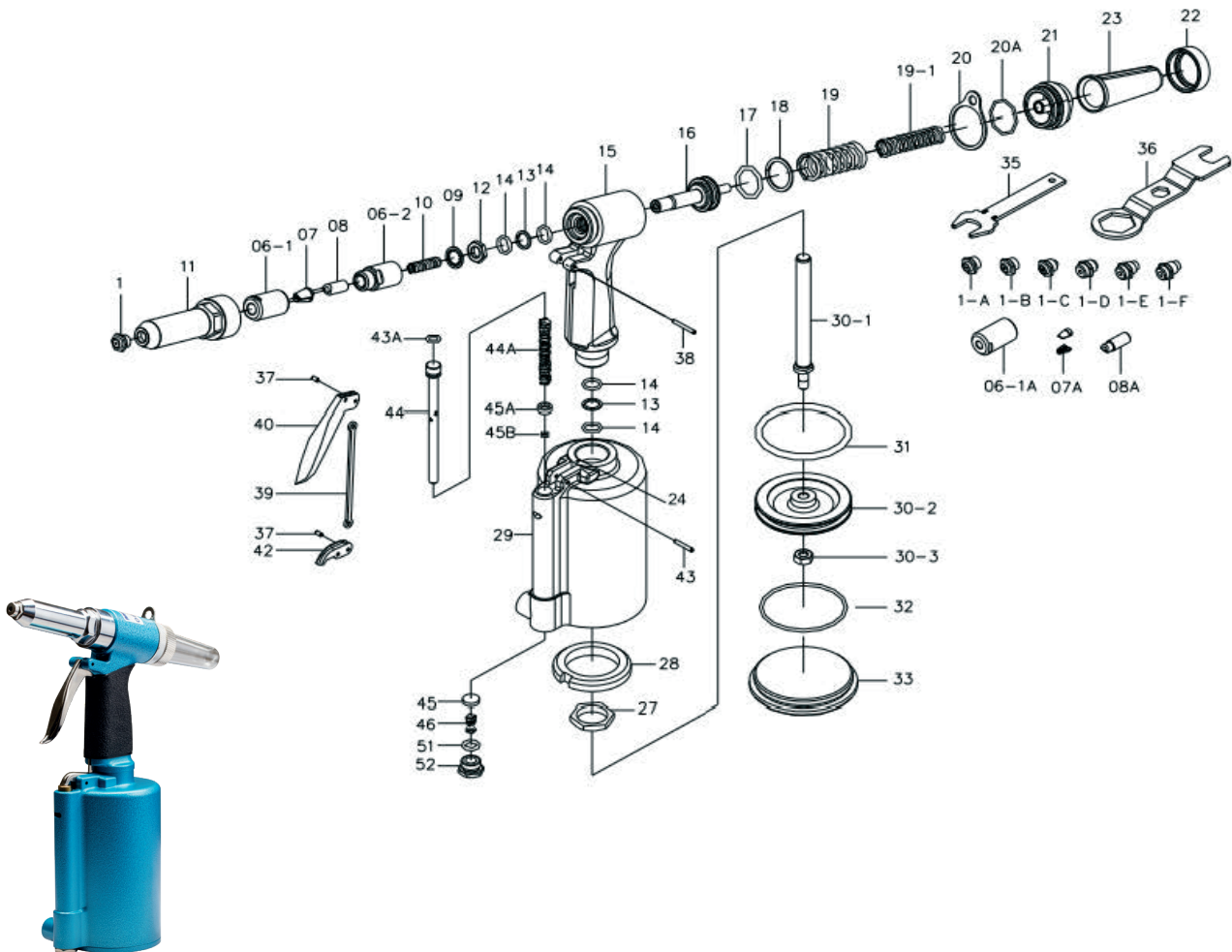




1/4" HEAVY-DUTY AIR HYDRAULIC RIVETER



TECHNICAL SPECIFICATION

PRODUCT TYPE 1/4" Heavy-duty air hydraulic riveter	
MODEL: 6160-0016	VIBRATION LEVEL: 0.6 m/sec ²
TRACTION POWER: 1894 kg (4166) lbs	MEASUREMENT UNCERTAINTY: K = 0.56 m/sec ²
WEIGHT: 2.0 kg 4.4 lbs	Tested in accordance with EN ISO 20643
AIR PRESSURE: 6.2 bar (90 PSI)	OTHER DATA:
RECOMMENDED MAXIMUM HOSE LENGTH: 30 ft / 10 m	AIR INLET 1/4" (6.3 mm)
RECOMMENDED MINIMUM HOSE BORE DIAMETER: 1/2" / 13 mm	RIVET CAPACITY FOR SETTING BLIND RIVETS UP TO 1/4" (6.4 mm)
NOISE LEVEL:	TOOL STROKE 16 mm
SOUND PRESSURE LEVEL NO LOAD 81.2 dB(A)	NOSE PIECES 2.4 mm 3.2 mm 4.0 mm 4.8 mm 5.6 mm 6.4 mm
SOUND POWER LEVEL 92.1 dB(A)	RIVET MATERIAL Aluminium Steel Stainless steel
MEASUREMENT UNCERTAINTY: K = 3dB	USE: Safety glasses and ear protectors
Tested in accordance with EN ISO 15744	
RECOMMENDED PERSONAL SAFETY EQUIPMENT	

PARTS NO.	DESCRIPTION	PARTS NO.	DESCRIPTION
P6160-0016-01A	Nosepieces 2,4 mm	P6160-0016-23	Safety Cap
P6160-0016-01B	Nosepieces 3,2 mm	P6160-0016-24	Spring Pin
P6160-0016-01C	Nosepieces 4,0 mm	P6160-0016-27	Lock Nut, Frame
P6160-0016-01D	Nosepieces 4,8 mm	P6160-0016-28	Rubber Cushion
P6160-0016-01E	Nosepieces 5,6 mm	P6160-0016-29	Cylinder
P6160-0016-01F	Nosepieces 6,4 mm	P6160-0016-30-1	Stem, Sir Piston
P6160-0016-06-1	Jaw Case, Front	P6160-0016-30-2	Piston Ring
P6160-0016-06-1A	Jaw Case, Front	P6160-0016-30-3	Lock Nut, Piston
P6160-0016-06-2	Jaw Case, Rear	P6160-0016-31	O-Ring
P6160-0016-07	Jaw (big)	P6160-0016-32	O-Ring
P6160-0016-07A	Jaw (small)	P6160-0016-33	Cap, Cylinder
P6160-0016-08	Jaw Pusher	P6160-0016-35	Spanner Gauge
P6160-0016-08A	Jaw Pusher	P6160-0016-36	Spanner
P6160-0016-09	Case Washer Ring	P6160-0016-37	Spring Pin, Trigger
P6160-0016-10	Spring, Jaw Pusher	P6160-0016-38	Spring Pin
P6160-0016-11	Frame Head	P6160-0016-39	Trigger Rod
P6160-0016-12	Lock Nut	P6160-0016-40	Trigger
P6160-0016-13	Backup Ring	P6160-0016-42	Trigger Lever
P6160-0016-14	O-Ring	P6160-0016-43	Spring Pin
P6160-0016-15	Frame	P6160-0016-43A	O-Ring
P6160-0016-16	Piston Ass.	P6160-0016-44	Pusher
P6160-0016-17	O-Ring	P6160-0016-44A	Spring Pin
P6160-0016-18	Backup Ring	P6160-0016-45	Valve
P6160-0016-19	Spring	P6160-0016-45A	Collar, Valve
P6160-0016-19-1	Spring	P6160-0016-45B	O-Ring
P6160-0016-20	Hanging Clip	P6160-0016-46	Spring, Valve
P6160-0016-20A	O-Ring	P6160-0016-51	O-Ring
P6160-0016-21	Frame Cap	P6160-0016-52	Cap, Valve
P6160-0016-22	Nut, Frame Cap		