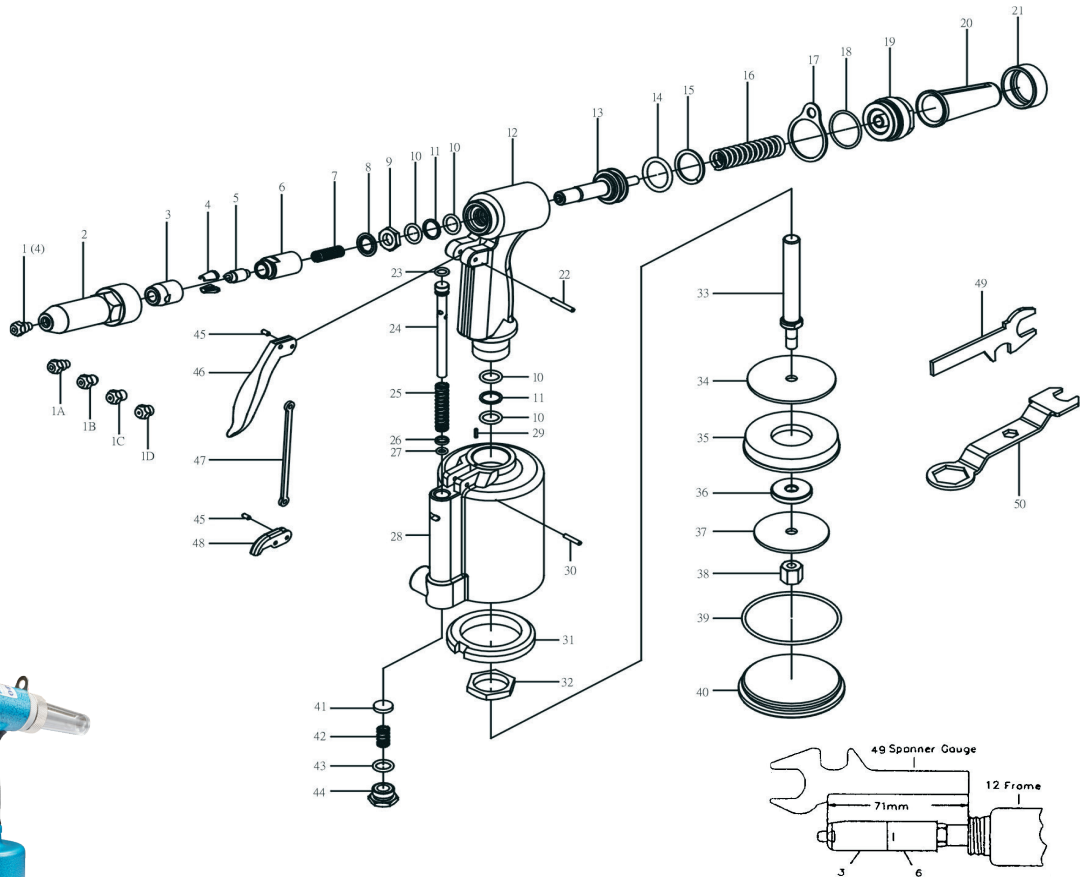




3/16" AIR HYDRAULIC RIVETER



TECHNICAL SPECIFICATION

PRODUCT TYPE 3/16" Air hydraulic riveter	
MODEL: 6160-0014	VIBRATION LEVEL: 1.2 m/sec ²
TRACTION POWER: 1219 kg (2680) lbs	MEASUREMENT UNCERTAINTY: K = 0.61 m/sec ²
WEIGHT: 1.50 kg 3.3 lbs	Tested in accordance with EN ISO 20643
AIR PRESSURE: 6.2 bar (90 PSI)	
RECOMMENDED MAXIMUM HOSE LENGTH: 30 ft / 10 m	OTHER DATA: AIR INLET 1/4" (6.3 mm)
RECOMMENDED MINIMUM HOSE BORE DIAMETER: 1/2" / 13 mm	RIVET CAPACITY FOR SETTING BLIND RIVETS UP TO 3/16" (4.8 mm)
NOISE LEVEL: SOUND PRESSURE LEVEL 77.8 dB(A) SOUND POWER LEVEL 88.8 dB(A) MEASUREMENT UNCERTAINTY: K = 3dB	TOOL STROKE 14 mm
	NOSE PIECES 2.4 mm 3.2 mm 4.0 mm 4.8 mm
Tested in accordance with EN ISO 15744	RIVET MATERIAL Aluminium Steel Stainless steel
RECOMMENDED PERSONAL SAFETY EQUIPMENT	USE: Safety glasses and ear protectors

PARTS NO.	DESCRIPTION	PARTS NO.	DESCRIPTION
P6160-0014-01A	Nosepiece 4,8 mm	P6160-0014-26	Collar, Valve
P6160-0014-01B	Nosepiece 4,0 mm	P6160-0014-27	O-Ring
P6160-0014-01C	Nosepiece 3,0 mm	P6160-0014-28	Cylinder
P6160-0014-01D	Nosepiece 2,4 mm	P6160-0014-29	Spring Pin
P6160-0014-02	Frame Head	P6160-0014-30	Spring Pin, Lever
P6160-0014-03	Jaw Case, Front	P6160-0014-31	Rubber Cushion
P6160-0014-04	Jaw	P6160-0014-32	Lock Nut, Frame
P6160-0014-05	Jaw Pusher	P6160-0014-33	Stem, Air Piston
P6160-0014-06	Jaw Case, Rear	P6160-0014-34	Plate, Large
P6160-0014-07	Spring, Jaw Pusher	P6160-0014-35	Piston Ring
P6160-0014-08	Case Washer Ring	P6160-0014-36	Washer
P6160-0014-09	Lock Nut	P6160-0014-37	Plate, Small
P6160-0014-10	O-Ring	P6160-0014-38	Lock Nut, Piston
P6160-0014-11	Backup Ring	P6160-0014-39	O-Ring
P6160-0014-12	Frame	P6160-0014-40	Cap, Cylinder
P6160-0014-13	Piston Assy.	P6160-0014-41	Valve
P6160-0014-14	O-Ring	P6160-0014-42	Spring, Valve
P6160-0014-15	Backup Ring	P6160-0014-43	O-Ring
P6160-0014-16	Spring	P6160-0014-44	Cap, Valve
P6160-0014-17	Hanging Clip	P6160-0014-45	Spring Pin, Trigger
P6160-0014-18	O-Ring	P6160-0014-46	Trigger
P6160-0014-19	Frame Cap	P6160-0014-47	Trigger Rod
P6160-0014-20	Safety Cap	P6160-0014-48	Trigger Lever
P6160-0014-21	Nut, Frame Cap	P6160-0014-49	Spanner Gauge
P6160-0014-22	Spring Pin, Lever	P6160-0014-50	Spanner
P6160-0014-23	O-Ring		
P6160-0014-24	Pusher, Valve		
P6160-0014-25	Spring, Valve		