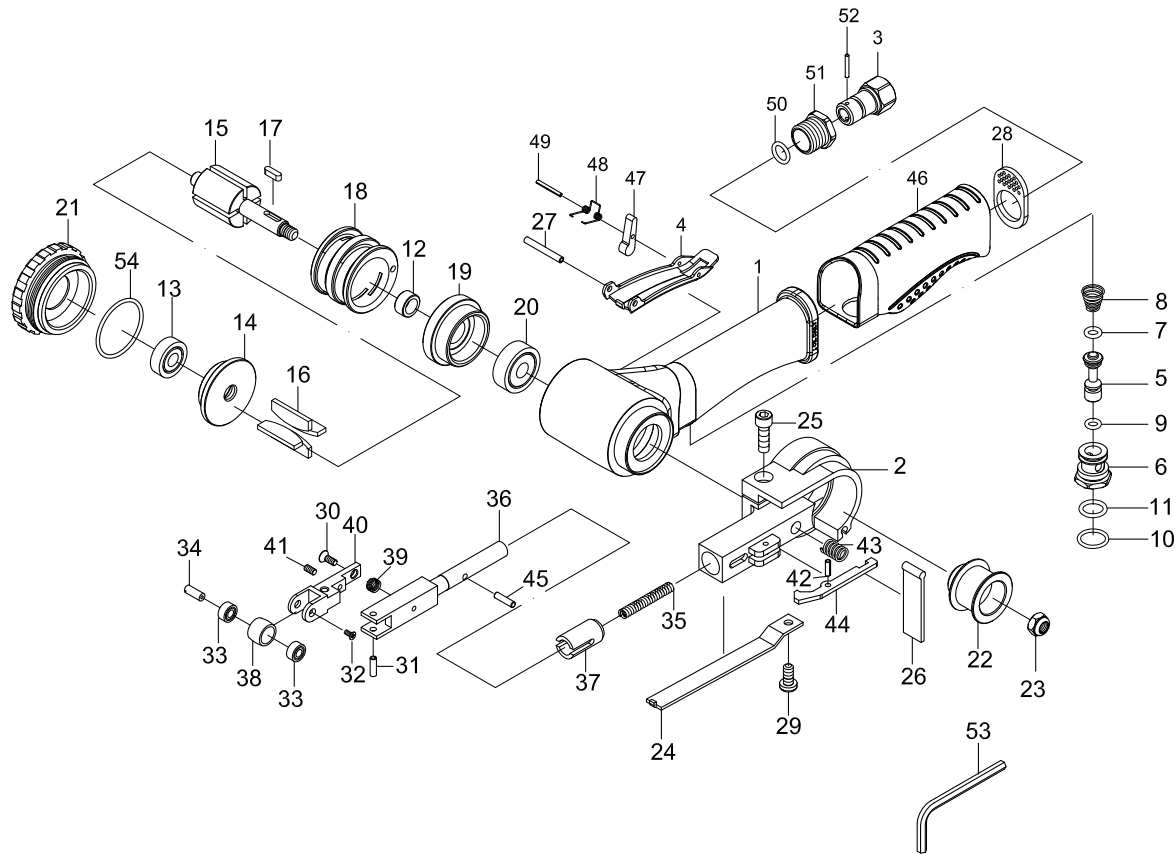




BELT SANDER 10 MM



| PARTS NO. | DESCRIPTION | PARTS NO. | DESCRIPTION | PARTS NO. | DESCRIPTION |
|---------------|------------------------|---------------|------------------------------|---------------|------------------------|
| P6145-0010-01 | Motor Housing | P6145-0010-20 | Ball Bearing (628zz) | P6145-0010-39 | Spring ◯ |
| P6145-0010-02 | Guard | P6145-0010-21 | Cap | P6145-0010-40 | Bracket ◯ |
| P6145-0010-03 | Air inlet | P6145-0010-22 | Drive Pulley | P6145-0010-41 | Screw (M3 x 6) ◯ |
| P6145-0010-04 | Throttle Lever | P6145-0010-23 | Hexagon Nut (M6) | P6145-0010-42 | Spring Pin |
| P6145-0010-05 | Valve Stem | P6145-0010-24 | Shoe | P6145-0010-43 | Spring |
| P6145-0010-06 | Valve | P6145-0010-25 | Screw (M5 x 16) | P6145-0010-44 | Safety Lever |
| P6145-0010-07 | O-Ring (4.8 x 1.9) • | P6145-0010-26 | Dust Cover • | P6145-0010-45 | Lock Pin |
| P6145-0010-08 | Spring | P6145-0010-27 | Spring Pin (3 x 24) | P6145-0010-46 | Grip |
| P6145-0010-09 | O-Ring (4.47 x 1.78) • | P6145-0010-28 | Exhaust Deflector | P6145-0010-47 | Safety Bar |
| P6145-0010-10 | O-Ring (12 x 1.6) | P6145-0010-29 | Screw (M4 x 8) | P6145-0010-48 | Spring |
| P6145-0010-11 | O-Ring (9.8 x 1.9) • | P6145-0010-30 | Screw (M3 x 8) ◯ | P6145-0010-49 | Spring Pin (2 x 16L) |
| P6145-0010-12 | Spacer | P6145-0010-31 | Spring Pin (3 x 10) ◯ | P6145-0010-50 | O-Ring (9 x 2) |
| P6145-0010-13 | Ball Bearing (607zz) | P6145-0010-32 | Screw (M2 x 5) ◯ | P6145-0010-51 | Screw |
| P6145-0010-14 | Rear End Plate | P6145-0010-33 | Ball Bearing (2) - (684zz) ◯ | P6145-0010-52 | Pin (2 x 14.8) |
| P6145-0010-15 | Rotor | P6145-0010-34 | Idle Pulley Shaft ◯ | P6145-0010-53 | Hex. Key Wrench (4 mm) |
| P6145-0010-16 | Rotor Blade (4) • | P6145-0010-35 | Spring | P6145-0010-54 | O-Ring (33.5 x 2) |
| P6145-0010-17 | Key (3 x 3 x 10) | P6145-0010-36 | Tension Bar | P6145-0010-60 | • Service Kit |
| P6145-0010-18 | Cylinder | P6145-0010-37 | Bushing | P6145-0010-61 | ◯ Rebuilt Kit |
| P6145-0010-19 | Front End Plate | P6145-0010-38 | Idle Pulley ◯ | | |

TECHNICAL SPECIFICATION

| PRODUCT TYPE | | MODEL: 6145-0010 | |
|--------------|--------------------------|--------------------------|---------------------|
| Belt Sander | | | |
| FREE SPEED | 20.000 RPM | HOSE SIZE: | 3/8" (10 mm) |
| | | WEIGHT: | 0,9 Kg |
| BELT SIZE: | 3/8" x 13" (10 x 330 mm) | AIR PRESSURE: | 6,2 Bar (90 P.S.I.) |
| | | LENGTH: | 305 mm |
| AIR INLET: | 1/4" NPT | AVERAGE AIR CONSUMPTION: | 110 L/Min (3.9 CFM) |

