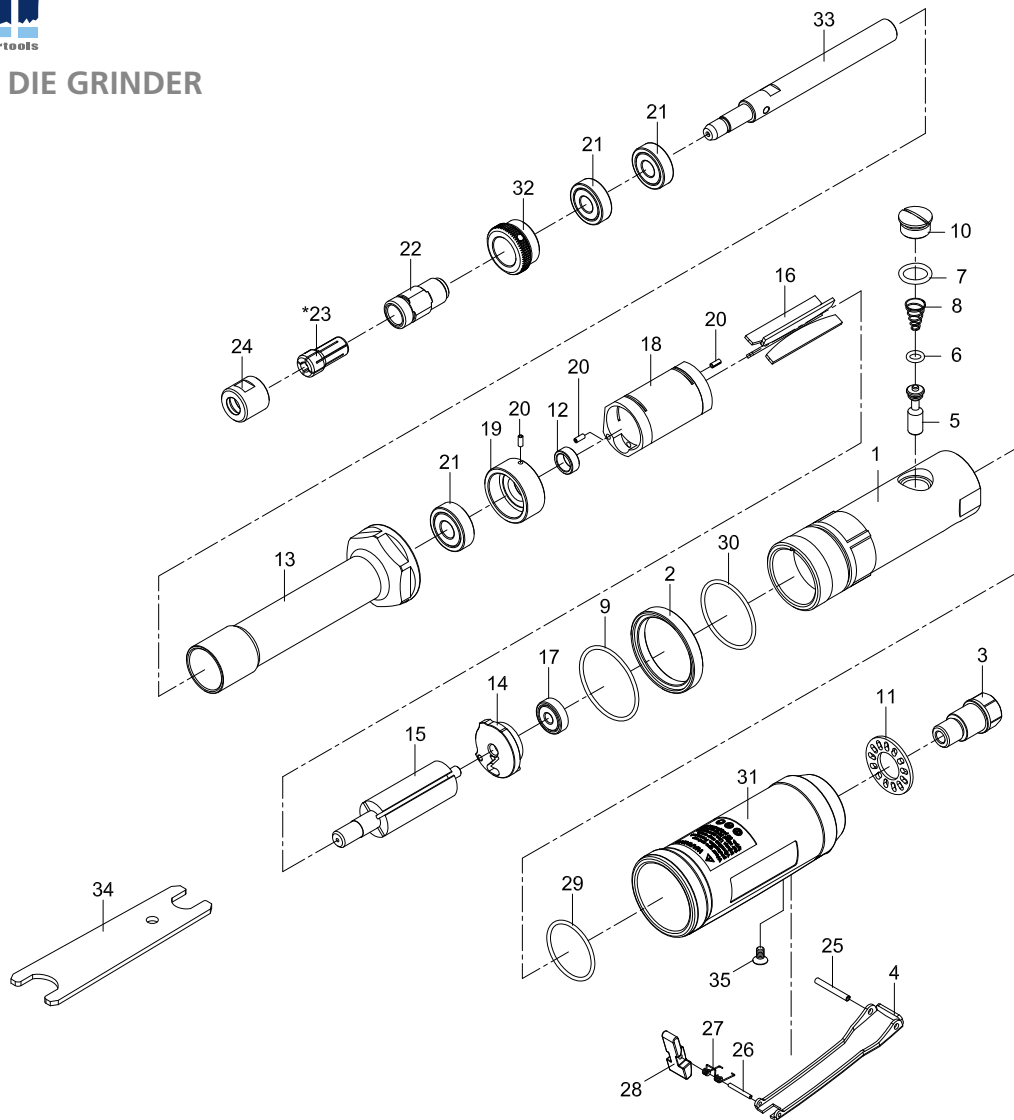




## EXTENDED DIE GRINDER



PARTS NO.	DESCRIPTION	PARTS NO.	DESCRIPTION	PARTS NO.	DESCRIPTION
P6110-1000-01	Motor Housing	P6110-1000-14	Rear End Plate	P6110-1000-25	Spring Pin (Ø 3 x 24L)
P6110-1000-02	Decorating Ring	P6110-1000-15	Rotor	P6110-1000-26	Spring Pin (Ø 2 x 16L)
P6110-1000-03	Air Inlet	P6110-1000-16	Rotor Blade (4) ●	P6110-1000-27	Spring
P6110-1000-04	Throttle Lever	P6110-1000-17	Ball Bearing (626zz)	P6110-1000-28	Safety Bar
P6110-1000-05	Valve Shaft	P6110-1000-18	Cylinder ○	P6110-1000-29	O-Ring (Ø 31.5 x Ø2) ●
P6110-1000-06	O-Ring (Ø 4.8 x Ø 2.2) ●	P6110-1000-19	Front End Plate	P6110-1000-30	O-Ring (Ø 35.5 x Ø2) ●
P6110-1000-07	O-Ring (Ø 11.8 x 2.4) ●	P6110-1000-20	Spring Pin (3) - (Ø 2.5 x 6L) ●	P6110-1000-31	Grip
P6110-1000-08	Spring ●	P6110-1000-21	Ball Bearing (3) (6000zz)	P6110-1100-32	Lock Nut
P6110-1000-09	O-Ring (Ø 40 x Ø2) ●	P6110-1100-22	Collet Holder	P6110-1100-33	Extension Bar
P6110-1000-10	Plug	P6110-1000-23	Collet (1/4")	P6110-1100-34	Spanner (2)
P6110-1000-11	Diffuser	P6110-1000-23B	Collet (6 mm) ○	P6110-1000-35	Screw (M4 x 8L)
P6110-1000-12	Rotor Bushing ○	P6110-1000-23C	Collet (8 mm)		
P6110-1100-13	Clamp Nut	P6110-1000-24	Collet Nut ○		
				P6110-1000-50	● Service Kit
				P6110-1000-51	○ Rebuilt Kit

### TECHNICAL SPECIFICATION

PRODUCT TYPE		MODEL: 6110-1100	
Extended die grinder			
FREE SPEED	22.000 RPM	HOSE SIZE:	3/8" (10 mm)
		WEIGHT:	1.2 Kg
COLLET SIZE:	1/4" (6 mm)	AIR PRESSURE:	6,2 Bar (90 P.S.I.)
		HORSEPOWER:	1 HP
AIR INLET:	1/4" NPT	AVERAGE AIR CONSUMPTION:	150 L/Min (5.3 CFM)

