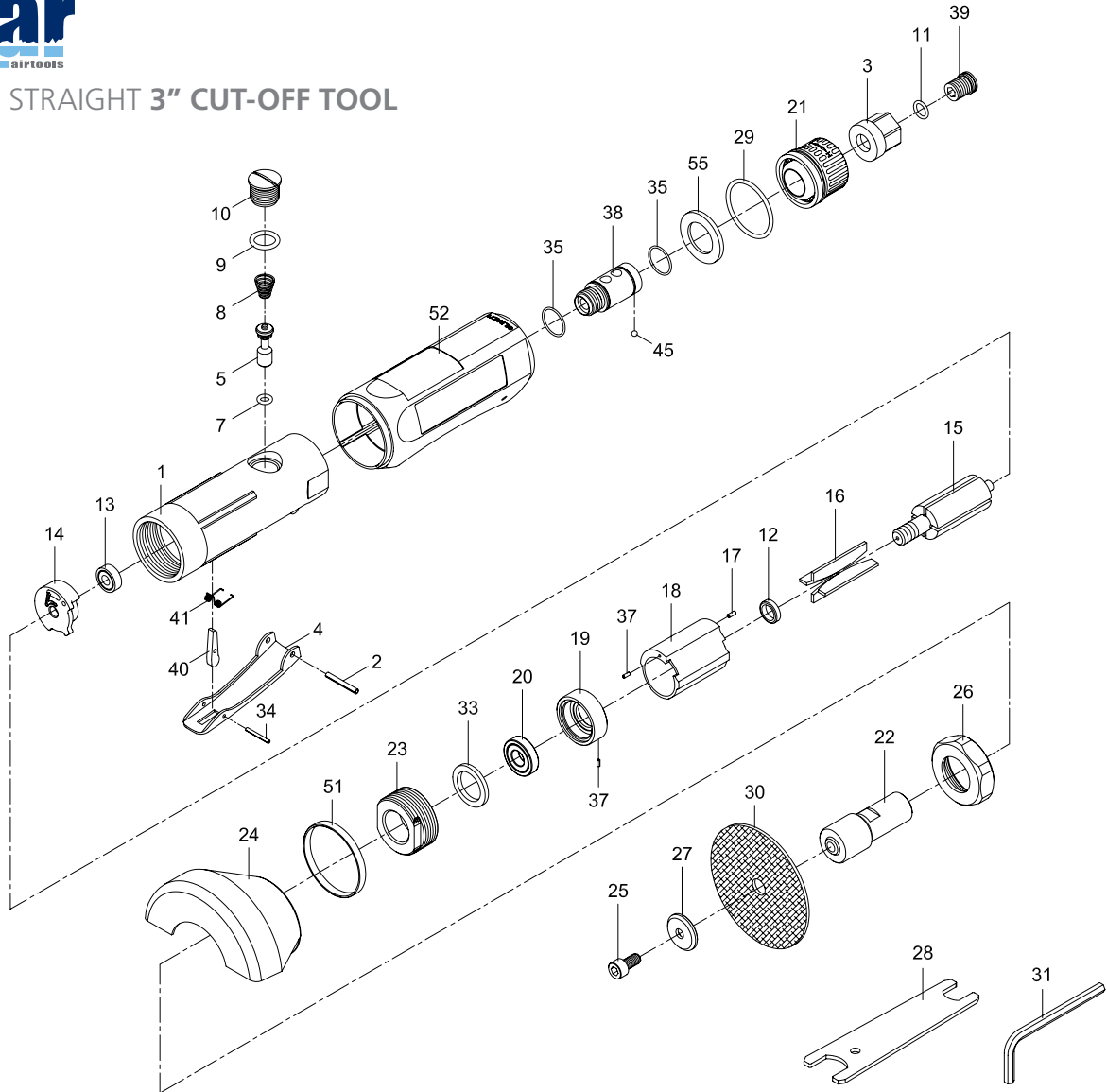




GRINDER STRAIGHT 3" CUT-OFF TOOL



PARTS NO.	DESCRIPTION	PARTS NO.	DESCRIPTION	PARTS NO.	DESCRIPTION
P6110-1075-01	Motor Housing	P6110-1075-17	Spring Pin (1,5 x 6)	P6110-1075-33	Washer
P6110-1075-02	Spring Pin (3 x 24)	P6110-1075-18	Cylinder	P6110-1075-34	Spring Pin (2 x 18)
P6110-1075-03	Air Inlet	P6110-1075-19	Front End Plate	P6110-1075-35	O-Ring (2) (14 x 1)
P6110-1075-04	Throttle Lever	P6110-1075-20	Ball Bearing (6000ZZ)	P6110-1075-37	Spring Pin (2 x 18)
P6110-1075-05	Valve Shaft	P6110-1075-21	Deflector	P6110-1075-38	Fixed Shaft
P6110-1075-07	O-Ring (4,8 x 1,9) •	P6110-1075-22	Spindle	P6110-1075-39	Screw
P6110-1075-08	Valve Spring •	P6110-1075-23	Clamp Nut	P6110-1075-40	Safety Bar
P6110-1075-09	O-Ring (11,8 x 2,4) •	P6110-1075-24	Disc Cover	P6110-1075-41	Spring
P6110-1075-10	Throttle Valve Plug	P6110-1075-25	Screw (M6 x 12)	P6110-1075-45	Steel Ball (1/8")
P6110-1075-11	O-Ring (7,5 1,5) •	P6110-1075-26	Clamp Nut	P6110-1075-51	Embellishment
P6110-1075-12	Rotor Bush	P6110-1075-27	Washer	P6110-1075-52	Rubber Grip
P6110-1075-13	Ball Bearing (696zz)	P6110-1075-28	Double Ended Spanner	P6110-1075-55	Damping Material
P6110-1075-14	Rear End Plate	P6110-1075-29	O-Ring (27 x 2) •	P6110-1075-60	• Service Kit
P6110-1075-15	Rotor	P6110-1075-30	Cutting Wheel (3")		
P6110-1075-16	Rotor Blade (4) •	P6110-1075-31	Hex Key Wrench (5 mm)		

TECHNICAL SPECIFICATION

PRODUCT TYPE		MODEL: 6110-1075	
Grinder - Straight - 3" Cut-off Tool			
FREE SPEED	20.000 RPM	HOSE SIZE:	3/8" (10 mm)
		WEIGHT:	0,8 Kg
DISC SIZE:	3" (75 mm)	AIR PRESSURE:	6,2 Bar (90 P.S.I.)
AIR INLET: 1/4" NPT	AVERAGE AIR CONSUMPTION:	113 L/Min (4 CFM)	

