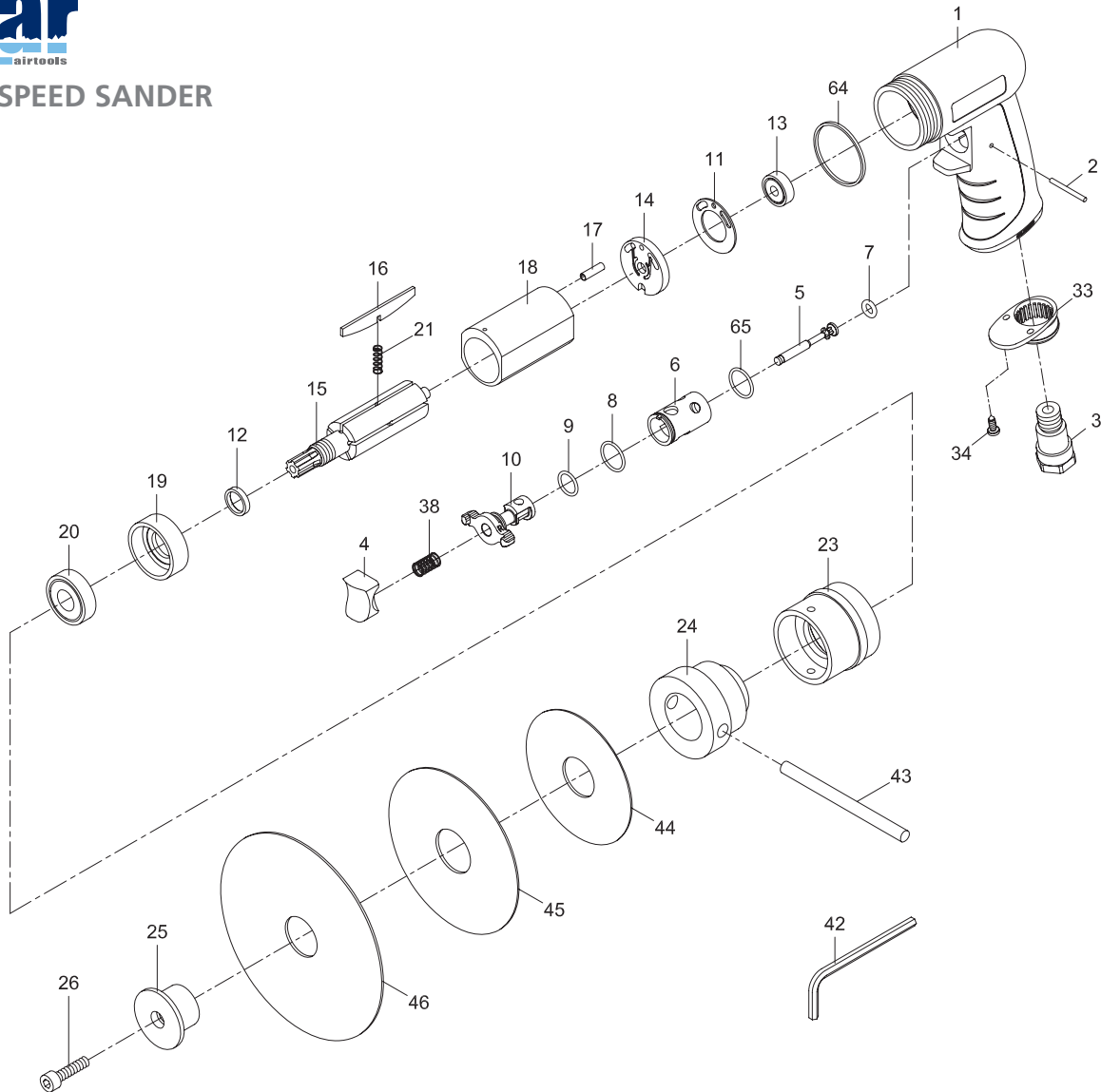




## 5" HIGH SPEED SANDER



PARTS NO.	DESCRIPTION	PARTS NO.	DESCRIPTION	PARTS NO.	DESCRIPTION
P6130-0010-01	Motor Housing	P6113-0125-14	Rear End Plate	P6130-0010-34	Screw (2) (TS 2,9)
P6130-0010-02	Pin (2,5 x 26,8)	P6113-0125-15	Rotor	P6130-0010-35	O-Ring (20 x 1,4)
P6130-0010-03	Air Inlet	P6113-0125-16	Rotor Blade (5) ●	P6113-0125-38	Valve Spring
P6130-0010-04	Trigger	P6113-0125-17	Spring Pin (2,5 x 12)	P6113-0125-42	Hex Key Wrench
P6130-0010-05	Valve Stem	P6113-0125-18	Cylinder	P6113-0125-43	Rod
P6130-0010-06	Valve Bushing	P6113-0125-19	Front End Plate	P6113-0125-44	Pad (3")
P6130-0010-07	O-Ring (4,5 x 2,5) ●	P6113-0125-20	Ball Bearing (6001ZZ)	P6113-0125-45	Pad (4-1/2")
P6130-0010-08	O-Ring (15,5 x 1,5)	P6113-0125-21	Spring (5)	P6113-0125-46	Pad (5-1/2")
P6130-0010-09	O-Ring (12 x 1,6)	P6113-0125-23	Clamp Nut	P6130-0010-64	Decoration Ring
P6130-0010-10	Reverse Lever	P6113-0125-24	Hub	P6130-0010-65	O-Ring (15,7 x 1,7) ●
P6113-0125-11	Motor Gasket ●	P6113-0125-25	Flange Washer	P6113-0125-70	● Service Kit
P6113-0125-12	Rotor Bush	P6113-0125-26	Screw (L M5 x 20)		
P6130-0010-13	Ball Bearing (626zz)	P6130-0010-33	Exhaust Diffuser		

### TECHNICAL SPECIFICATION

PRODUCT TYPE		MODEL: 6113-0125	
Reversible High Speed Sander			
FREE SPEED	16.000 RPM	HOSE SIZE:	3/8" (10 mm)
		WEIGHT:	1,0 Kg
PAD SIZE:	3", 4 1/2", 5 1/2"	AIR PRESSURE:	6,2 Bar (90 P.S.I.)
AIR INLET:	1/4" NPT	AVERAGE AIR CONSUMPTION:	113 L/Min (4 CFM)

