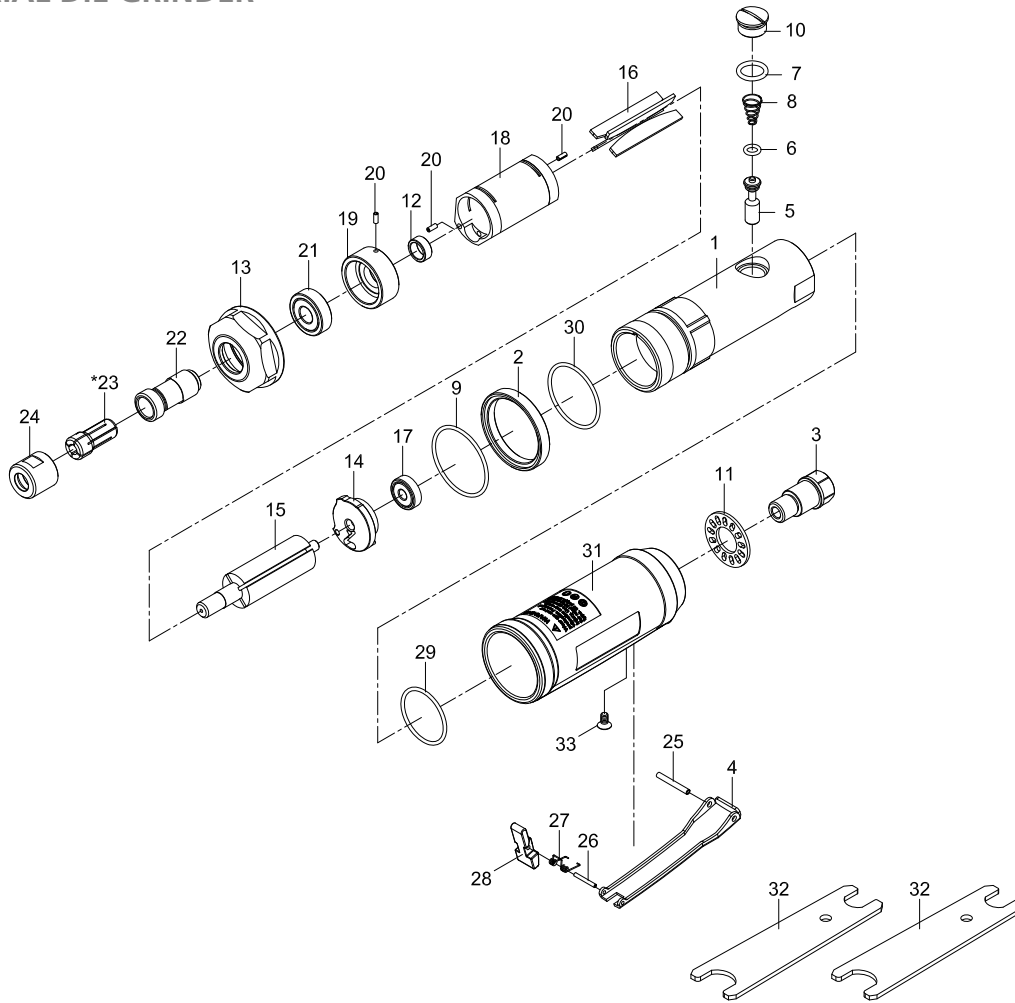




INDUSTRIAL DIE GRINDER



PARTS NO.	DESCRIPTION		
P6110-1000-01	Motor Housing	P6110-1000-14	Rear End Plate
P6110-1000-02	Decorating Ring	P6110-1000-15	Rotor
P6110-1000-03	Air Inlet	P6110-1000-16	Rotor Blade (4) •
P6110-1000-04	Throttle Lever	P6110-1000-17	Ball Bearing (626zz)
P6110-1000-05	Valve Shaft	P6110-1000-18	Cylinder ○
P6110-1000-06	O-Ring (Ø 4.8 x Ø 1.9) •	P6110-1000-19	Front End Plate
P6110-1000-07	O-Ring (Ø 11.8 x 2.4) •	P6110-1000-20	Spring Pin (3) - Ø 2.5 x 6L) •
P6110-1000-08	Spring •	P6110-1000-21	Ball Bearing (6000zz)
P6110-1000-09	O-Ring (Ø 40 x Ø2) •	P6110-1000-22	Collet Holder
P6110-1000-10	Plug	P6110-1000-23	Collet (1/4")
P6110-1000-11	Diffuser	P6110-1000-23B	Collet (6 mm) ○
P6110-1000-12	Rotor Bushing ○	P6110-1000-23C	Collet (8 mm)
P6110-1000-13	Clamp Nut	P6110-1000-24	Collet Nut ○
		P6110-1000-25	Spring Pin (Ø 3 x 24L)
		P6110-1000-26	Spring Pin (Ø 2 x 16L)
		P6110-1000-27	Spring
		P6110-1000-28	Safety Bar
		P6110-1000-29	O-Ring (Ø 31.5 x Ø2) •
		P6110-1000-30	O-Ring (Ø 35.5 x Ø2) •
		P6110-1000-31	Grip
		P6110-1000-32	Spanner (2)
		P6110-1000-33	Screw (M4 x 8L)
		P6110-1000-50	• Service Kit
		P6110-1000-51	○ Rebuilt Kit

TECHNICAL SPECIFICATION

PRODUCT TYPE		MODEL: 6110-1000	
Die grinder			
FREE SPEED	22.000 RPM	HOSE SIZE:	3/8" (10 mm)
		WEIGHT:	0,8 Kg
COLLET SIZE:	1/4" (6 mm)	AIR PRESSURE:	6,2 Bar (90 P.S.I.)
AIR INLET:	1/4" NPT	AVERAGE AIR CONSUMPTION:	150 L/Min (5.3 CFM)

