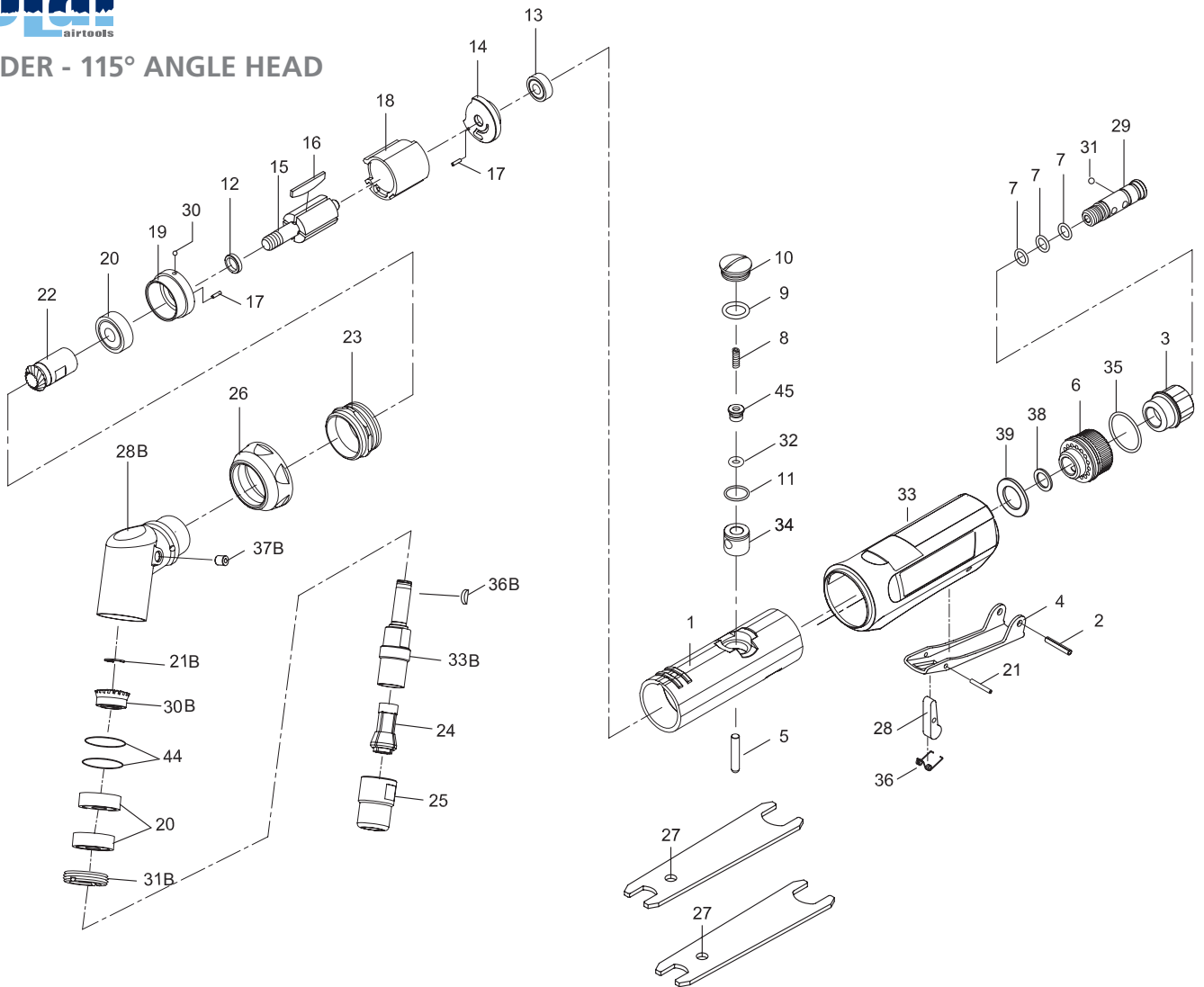




## GRINDER - 115° ANGLE HEAD



### PARTS NO. DESCRIPTION

- P6110-0000-01 Motor Housing
- P6110-0000-02 Lever Pin (3 x 18L)
- P6110-0000-03 Air Inlet
- P6110-0000-04 Throttle Lever
- P6110-0000-05 Valve Shaft
- P6110-0000-06 Deflector
- P6110-0000-07 O-Ring (3) (7,5 x 1,5)
- P6110-0000-08 Spring •
- P6110-0000-09 O-Ring (9,5 x 1,9) •
- P6110-0000-10 Valve Screw
- P6110-0000-11 O-Ring (10,5 x 1) •
- P6110-0000-12 Rotor Spacer
- P6110-0000-13 Ball Bearing (696ZZ) •
- P6110-0000-14 Rear End Plate
- P6110-0000-15 Rotor
- P6110-0000-16 Vane (4) •

- P6110-0000-17 Spring Pin (2) (1,5 x 6)
- P6110-0000-18 Cylinder
- P6110-0000-19 Front End Plate
- P6110-0000-20 Ball Bearing (2) (608ZZ) •
- P6110-0000-21 Spring Pin
- P6110-0115-21B Crescent Rings (5103-31)
- P6110-0115-22 Pinion Gear
- P6110-0090-23 Front Coupling
- P6110-0000-24 Collet
- P6110-0000-25 Collet Nut
- P6110-0090-26 Front Cap
- P6110-0000-27 Spanner (2)
- P6110-0000-28 Safety Bar
- P6110-0115-28B Head
- P6110-0000-29 Fixed Shaft
- P6110-0000-30 Steel Ball (3/32")

- P6110-0115-30B Bevel Gear
- P6110-0000-31 Steel Ball (1/8")
- P6110-0090-31B Lock Ring
- P6110-0000-32 O-Ring (3,8 x 1,9)
- P6110-0000-36 Spring
- P6110-0090-36B Key •
- P6110-0000-33 Grip
- P6110-0090-33B Spindle
- P6110-0000-34 Bushing
- P6110-0000-35 O-Ring (20 x 1,4) •
- P6110-0000-37 Throttle Valve
- P6110-0090-37B Oil Cap
- P6110-0000-38 Washer
- P6110-0000-39 Damping Material
- P6110-0115-44 Shim (2)
- P6110-0000-50 • Service Kit

### TECHNICAL SPECIFICATION

<b>PRODUCT TYPE</b> Grinder - 115° Angle Head		<b>MODEL:</b> 6110-0115	
<b>FREE SPEED</b> 20.000 RPM	<b>HOSE SIZE:</b> 3/8" (10 mm)	<b>WEIGHT:</b> 0,5 Kg	
<b>COLLET SIZE:</b> 1/4" (6 mm)	<b>AIR PRESSURE:</b> 6,2 Bar (90 P.S.I.)		
<b>AIR INLET:</b> 1/4" NPT	<b>AVERAGE AIR CONSUMPTION:</b> 113 L/Min (4 CFM)		

