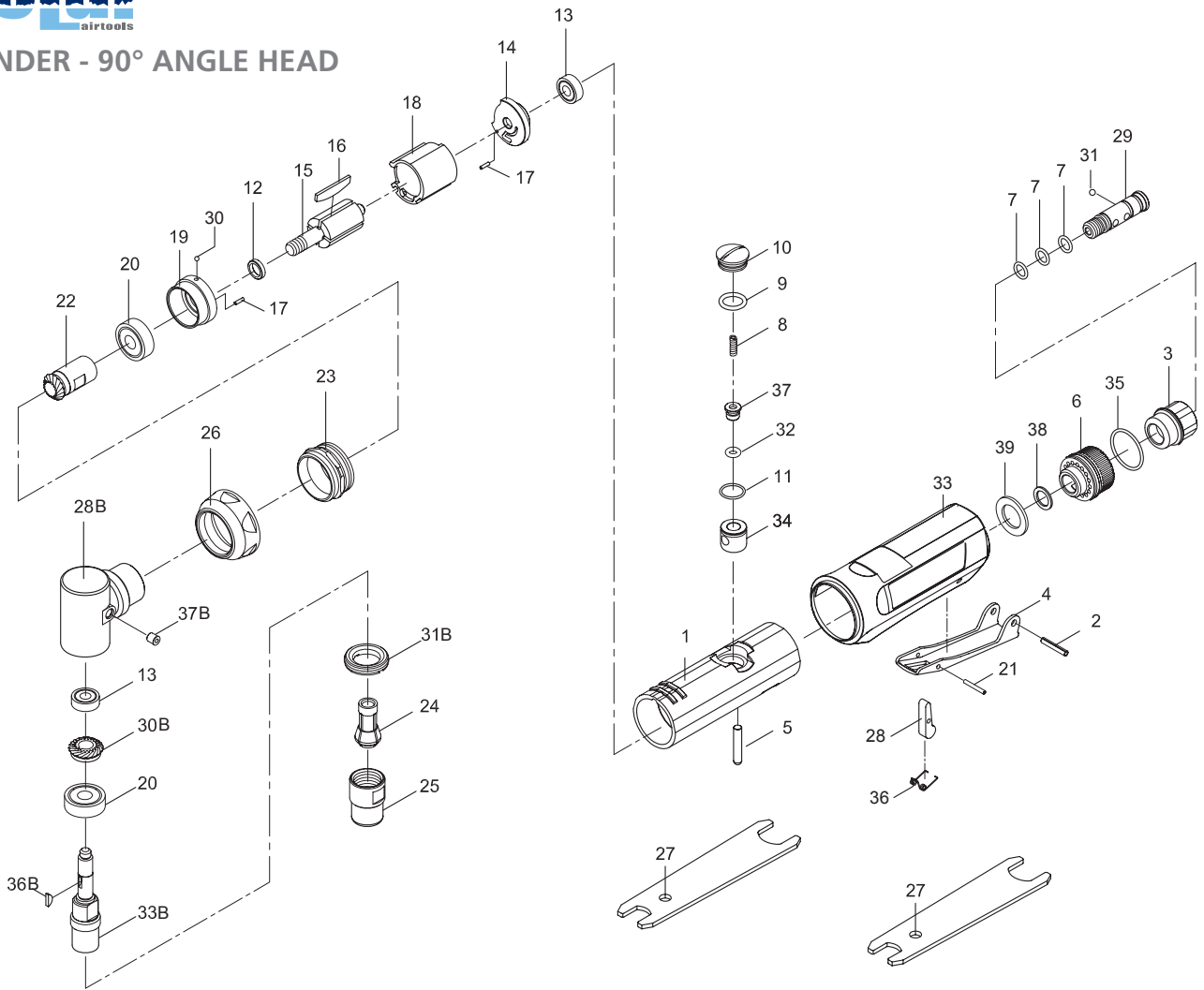




GRINDER - 90° ANGLE HEAD



PARTS NO.

DESCRIPTION

P6110-0000-01	Motor Housing	P6110-0000-17	Spring Pin (2) (1,5 x 6)	P6110-0000-31	Steel Ball
P6110-0000-02	Lever Pin (3 x 18L)	P6110-0000-18	Cylinder	P6110-0090-31B	Lock Ring
P6110-0000-03	Air Inlet	P6110-0000-19	Front End Plate	P6110-0000-32	O-Ring (3,8 x 1,9) •
P6110-0000-04	Throttle Lever	P6110-0000-20	Ball Bearing (2) (608ZZ) •	P6110-0000-33	Grip
P6110-0000-05	Valve Shaft	P6110-0000-21	Spring Pin (2 x 15L)	P6110-0090-33B	Spindle
P6110-0000-06	Deflector	P6110-0090-22	Pinion Gear	P6110-0000-34	Bushing
P6110-0000-07	O-Ring (3) (7,5 x 1,5)	P6110-0090-23	Front Coupling	P6110-0000-35	O-Ring (20 x 1,4) •
P6110-0000-08	Spring •	P6110-0000-24	Collet	P6110-0000-36	Spring
P6110-0000-09	O-Ring (9,5 x 1,9) •	P6110-0000-25	Collet Nut	P6110-0090-36B	Key
P6110-0000-10	Valve Screw	P6110-0090-26	Front Cap	P6110-0000-37	Throttle Valve
P6110-0000-11	O-Ring (10,5 x 1) •	P6110-0000-27	Spanner (2)	P6110-0090-37B	Oil Cap
P6110-0000-12	Rotor Spacer	P6110-0000-28	Safety Bar	P6110-0000-38	Washer
P6110-0000-13	Ball Bearing (696ZZ) •	P6110-0090-28B	Head	P6110-0000-39	Damping Material
P6110-0000-14	Rear End Plate	P6110-0000-29	Fixed Shaft	P6110-0000-50	• Service Kit
P6110-0000-15	Rotor	P6110-0000-30	Steel Ball (3/32")		
P6110-0000-16	Vane (4) •	P6110-0090-30B	Bevel Gear		

TECHNICAL SPECIFICATION

PRODUCT TYPE		MODEL: 6110-0090	
Grinder - 90° Angle Head			
FREE SPEED	20.000 RPM	HOSE SIZE:	3/8" (10 mm)
		WEIGHT:	0,5 Kg
COLLET SIZE:	1/4" (6 mm)	AIR PRESSURE:	6,2 Bar (90 P.S.I.)
AIR INLET:	1/4" NPT	AVERAGE AIR CONSUMPTION:	113 L/Min (4 CFM)

