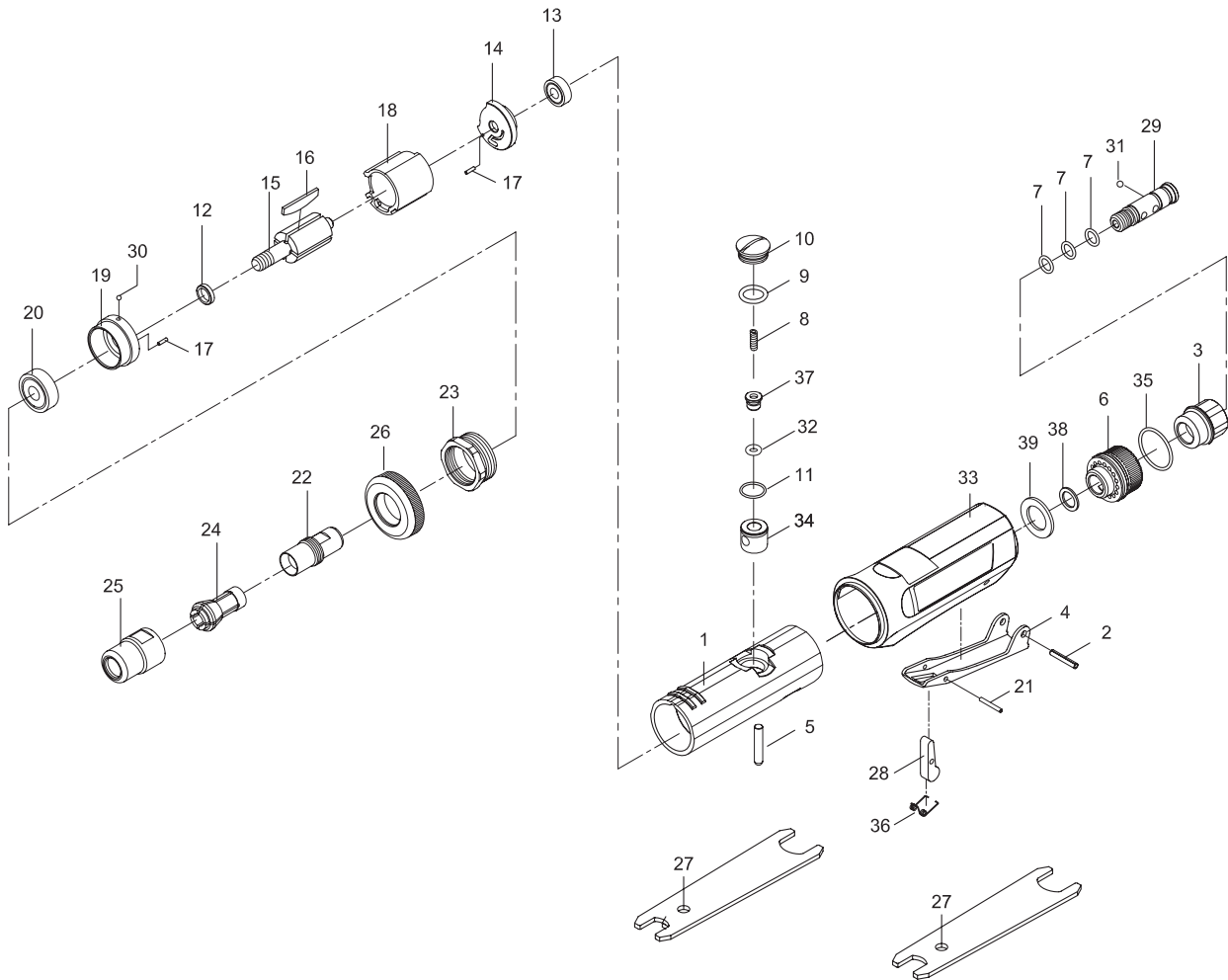




## 1/4" GRINDER - STRAIGHT



### PARTS NO. DESCRIPTION

P6110-0000-01 Motor Housing  
 P6110-0000-02 Lever Pin (3 x 18L)  
 P6110-0000-03 Air Inlet  
 P6110-0000-04 Throttle Lever  
 P6110-0000-05 Valve Shaft  
 P6110-0000-06 Deflector  
 P6110-0000-07 O-Ring (3) (7,5 x 1,5)  
 P6110-0000-08 Spring  
 P6110-0000-09 O-Ring (9,8 x 1,9)  
 P6110-0000-10 Valve Screw  
 P6110-0000-11 O-Ring (10,5 x 1)  
 P6110-0000-12 Rotor Spacer  
 P6110-0000-13 Ball Bearing (696ZZ)  
 P6110-0000-14 Rear End Plate

P6110-0000-15 Rotor  
 P6110-0000-16 Vane (4)  
 P6110-0000-17 Spring Pin (2) (1,5 x 6)  
 P6110-0000-18 Cylinder  
 P6110-0000-19 Front End Plate  
 P6110-0000-20 Ball Bearing (608ZZ)  
 P6110-0000-21 Spring Pin (2 x 15L)  
 P6110-0000-22 Spindle  
 P6110-0000-23 Front Coupling  
 P6110-0000-24 Collet  
 P6110-0000-25 Collet Nut  
 P6110-0000-26 Front Cap  
 P6110-0000-27 Spanner (2)  
 P6110-0000-28 Safety Bar

P6110-0000-29 Fixed Shaft  
 P6110-0000-30 Steel Ball (3/32")  
 P6110-0000-31 Steel Ball (1/8")  
 P6110-0000-32 O-Ring (3,8 x 1,9)  
 P6110-0000-33 Grip  
 P6110-0000-34 Bushing  
 P6110-0000-35 O-Ring (20 x 1,4)  
 P6110-0000-36 Spring  
 P6110-0000-37 Throttle Valve  
 P6110-0000-38 Washer  
 P6110-0000-39 Damping Material  
 P6110-0000-50 Service Kit

### TECHNICAL SPECIFICATION

PRODUCT TYPE		MODEL: 6110-0000	
1/4" Grinder - Straight			
FREE SPEED	25.000 R.P.M	HOSE SIZE:	3/8" (10 mm)
		WEIGHT:	0,4 Kg
COLLET SIZE:	1/4" (6 mm)	AIR PRESSURE:	6,2 Bar (90 P.S.I.)
AIR INLET:	1/4" NPT	AVERAGE AIR CONSUMPTION:	113 L/Min (4 CFM)

