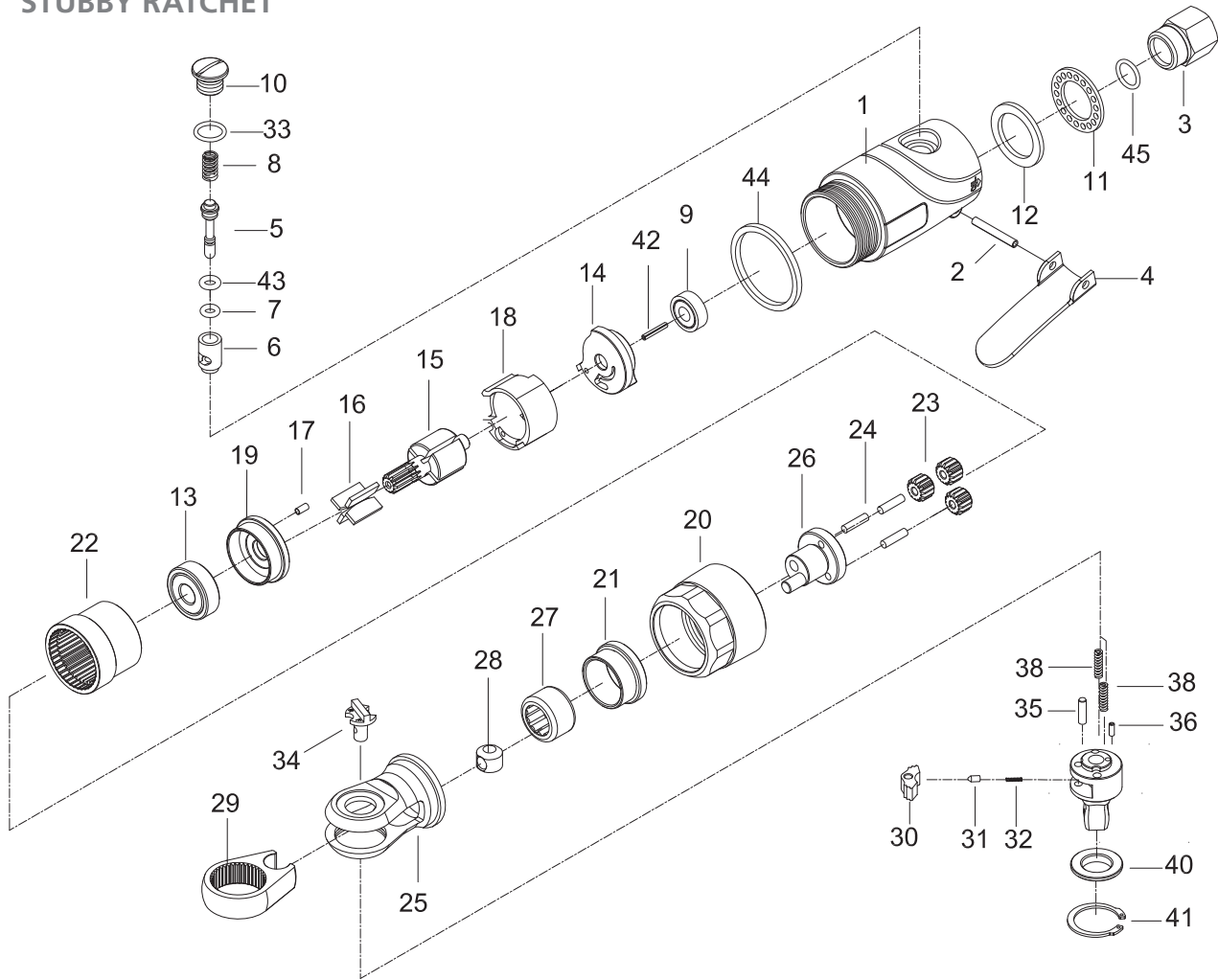




3/8" STUBBY RATCHET



PARTS NO.	DESCRIPTION		
P6105-0014-01	Housing	P6105-0014-17	Spring Pin (2,5 x 5L) •
P6105-0014-02	Spring Pin (3 x 20L)	P6105-0014-18	Cylinder
P6105-0014-03	Air Inlet	P6105-0014-19	Front End Plate
P6105-0014-04	Throttle Lever	P6105-0014-20	Clamp Ring
P6105-0014-05	Valve Stem	P6105-0014-21	Needle Housing
P6105-0014-06	Valve Bushing	P6105-0014-22	Internal Gear
P6105-0014-07	O-Ring (2 x 1)	P6105-0014-23	Plante Gear (3) ◦
P6105-0014-08	Spring	P6105-0014-24	Pin (3) (3,5 x 11,8L)
P6105-0014-09	Ball Bearing (696ZZ)	P6105-0014-25	Ratchet Housing
P6105-0014-10	Throttle Valve Plug	P6105-0014-26	Crank Shaft
P6105-0014-11	Exhaust Diffuser	P6105-0014-27	Needle Bearing (HK 1312)
P6105-0014-12	Damping Material	P6105-0014-28	Drive Bushing
P6105-0014-13	Ball Bearing (608ZZ)	P6105-0014-29	Yoke ◦
P6105-0014-14	Rear End Plate	P6105-0014-30	Ratchet Pawl ◦
P6105-0014-15	Rotor	P6105-0014-31	Spring Cap
P6105-0014-16	Vane (4) •	P6105-0014-32	Spring •
		P6105-001433	O-Ring (8 x 2)
		P6105-0014-34	Reverse Shaft •
		P6105-0014-35	Pin (3 x 1,08) •
		P6105-0014-36	Spring Pin (2 x 5L) •
		P6105-1038-37	Ratchet Anvil 3/8" (Wobble) ◦
		P6105-0014-38	Spring (2) •
		P6105-1038-40	Thrust Washer •
		P6105-0014-41	Retainer Ring (RTW-20)
		P6105-0014-42	Spring Pin (3,8 x 1,9)
		P6105-0014-43	O-Ring (3,8 x 1,9)
		P6105-0014-44	Rubber Ring
		P6105-0014-45	O-Ring (11,4 x 1,25)
		P6105-1038-50	• Service Kit
		P6105-1038-51	◦ Rebuilt Kit

TECHNICAL SPECIFICATION

PRODUCT TYPE		MODEL: 6105-1038
3/8" professional stubby ratchet		
SQUARE DRIVE: 3/8"	AIR INLET: 1/4" NPT	AVERAGE AIR CONSUMPTION: 113 L/Min (4 CFM)
FREE SPEED: 350 RPM	HOSE SIZE: 3/8" (10 mm)	WEIGHT: 0,4 Kg
MAX. TORQUE: 40,7 Nm (30 ft-lbs)	AIR PRESSURE: 6,2 Bar (90 P.S.I.)	

