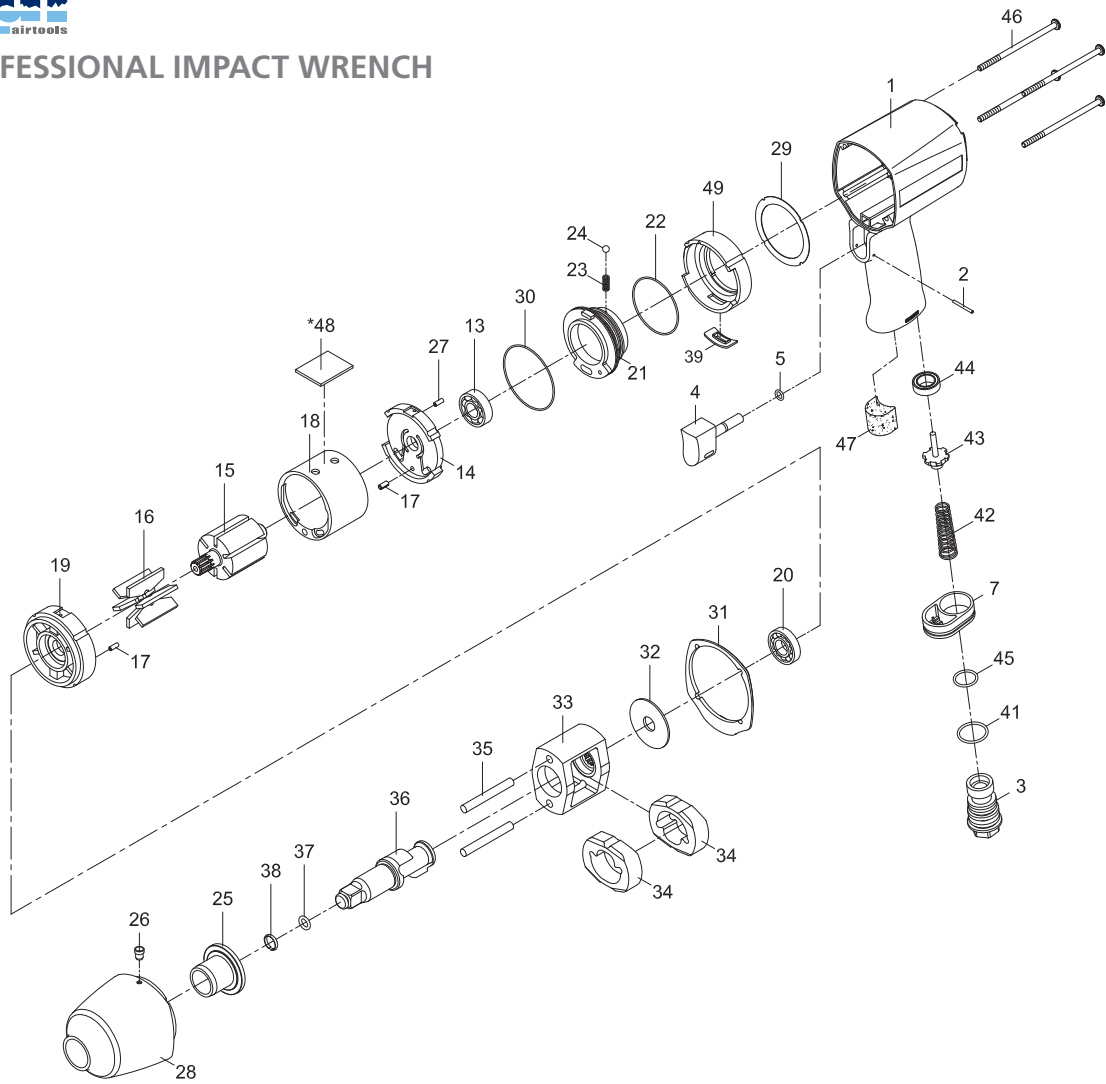




1/2" PROFESSIONAL IMPACT WRENCH



PARTS NO.	DESCRIPTION				
P6100-2012-01	Motor Housing	P6100-2012-22	O-Ring (38,5 x 2) ●	P6100-2012-37	O-Ring (6,5 x 2) ●
P6100-2012-02	Spring Pin (2 x 20)	P6100-2012-23	Spring	P6100-2012-38	Retaining Ring ●
P6100-2012-03	Air Inlet	P6100-2012-24	Steel Ball (9/64") ●	P6100-2012-39	Gasket
P6100-2012-04	Trigger	P6100-2012-25	Anvil Bushing	P6100-2012-41	O-Ring (20,35 x 1,78) ○
P6100-2012-05	O-Ring (4 x 1) ●	P6100-2012-26	Oil Cap (1/8")	P6100-2012-42	Valve Spring ●
P6100-2012-07	Exhaust Diffuser	P6100-2012-27	Spring Pin (2 x 5)	P6100-2012-43	Valve Stem
P6100-2012-13	Ball Bearing (6001)	P6100-2012-28	Hammer Case	P6100-2012-44	Rubber Spacer
P6100-2012-14	Rear End Plate	P6100-2012-29	Gasket ○	P6100-2012-45	O-Ring (15,7 x 1,7) ○
P6100-2012-15	Rotor	P6100-2012-30	O-Ring (48 x 1) ○	P6100-2012-46	Screw (4) - (M4 x 90)
P6100-2012-16	Rotor Blade (6) ●	P6100-2012-31	Gasket ○	P6100-2012-47	Muffler Material
P6100-2012-17	Spring Pin (3,5 x 2)	P6100-2012-32	Washer	P6100-2012-48*	Muffler Material
P6100-2012-18	Cylinder	P6100-2012-33	Hammer Cage ○	P6100-2012-49	Inlet Guide
P6100-2012-19	Front End Plate	P6100-2012-34	Hammer (2)	P6100-2012-50	● Service Kit
P6100-2012-20	Ball Bearing (EE4)	P6100-2012-35	Hammer Pin (2)	P6100-2012-51	○ Rebuilt Kit
P6100-2012-21	Air Regulator	P6100-2012-36	Anvil (RH-Type1/2")		* Optional Parts

TECHNICAL SPECIFICATION

PRODUCT TYPE		MODEL: 6100-2012
1/2" professional impact wrench		
SQUARE DRIVE: 1/2"	WORKING TORQUE RANGE: 68-746 Nm (50-550 ft-lbs)	AIR PRESSURE: 6,2 Bar (90 P.S.I.)
FREE SPEED: 9.000 RPM	AIR INLET: 1/4" NPT	AVERAGE AIR CONSUMPTION: 158 L/Min (5,6 CFM)
MAX. TORQUE: 1.054 Nm (780 ft-lbs)	HOSE SIZE: 3/8" (10 mm)	WEIGHT: 2,1 Kg

