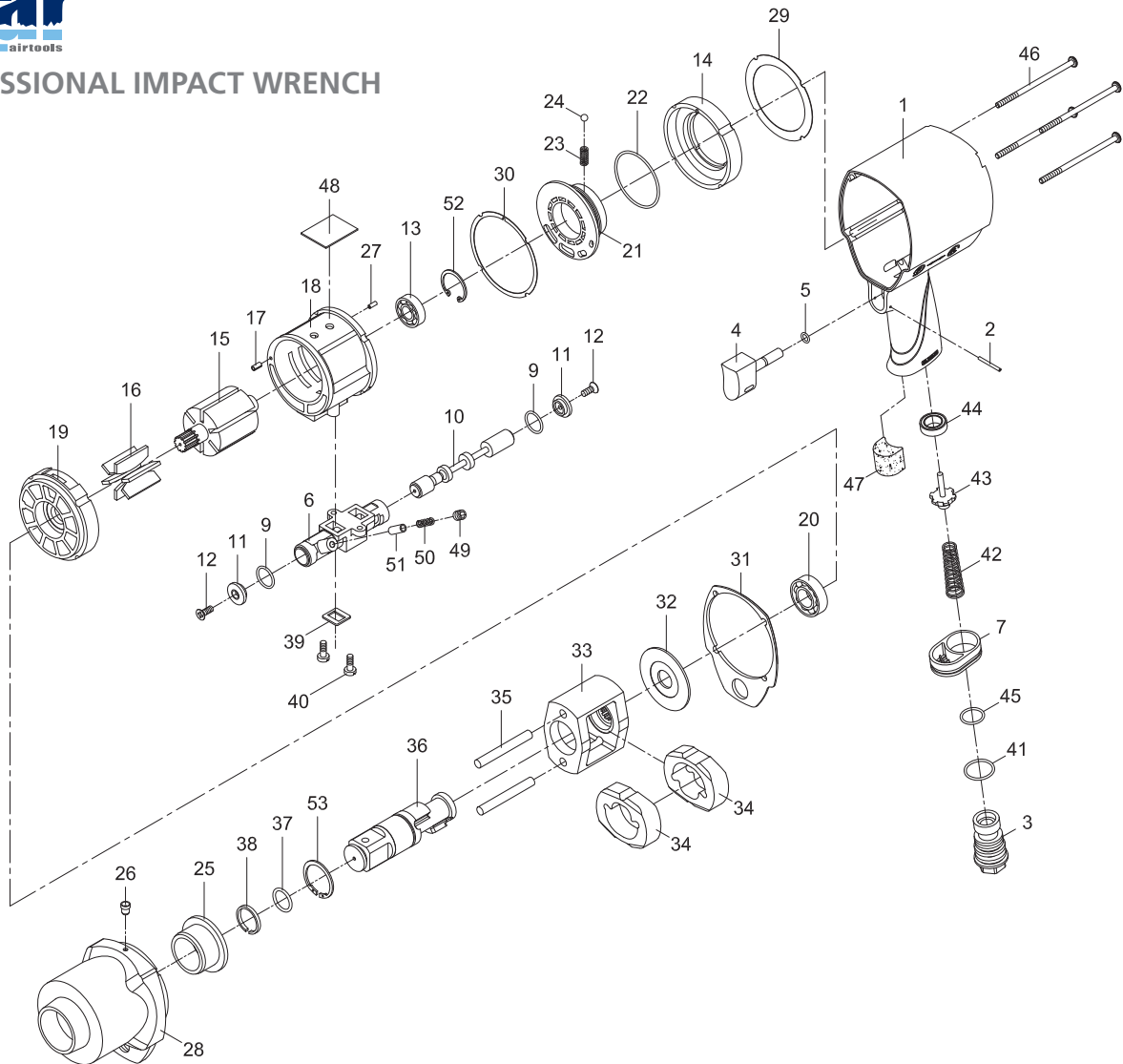




1" PROFESSIONAL IMPACT WRENCH



PARTS NO. DESCRIPTION

P6100-0034-01	Motor Housing	P6100-0034-16	Rotor Blade (6) •	P6100-0034-30	Gasket ○	P6100-0034-44	Rubber Spacer
P6100-0034-02	Spring Pin (2 x 20)	P6100-0034-17	Spring Pin (2,5 x 5)	P6100-0034-31	Gasket ○	P6100-0034-45	O-Ring (15,7 x 1,7) ○
P6100-0034-03	Air Inlet	P6100-0034-18	Cylinder	P6100-0034-32	Washer	P6100-0034-46	Screw (4) - (M6 x 110)
P6100-0034-04	Trigger	P6100-0034-19	Front End Plate	P6100-0034-33	Hammer Cage	P6100-0034-47	Muffler Material
P6100-2012-05	O-Ring (4 x 1) •	P6100-0034-20	Ball Bearing (6003z)	P6100-0034-34	Hammer (2)	P6100-0034-48	Muffler Material
P6100-0034-06	Reverse Valve	P6100-0034-21	Air Regulator	P6100-0034-35	Hammer Pin (2) ○	P6100-0034-49	Set Screw (M5 x 8)
P6100-0034-07	Exhaust Diffuser	P6100-0034-22	O-Ring (45,5 x 2) •	P6100-2010-36	Anvil (1")	P6100-0034-50	Spring
P6100-0034-09	O-Ring (2) - (15,5 x 1,5) •	P6100-0034-23	Spring	P6100-2010-37	O-Ring (17,8 x 2,4) •	P6100-0034-51	Pin
P6100-0034-10	Reverse Stem	P6100-0034-24	Steel Ball (9/64") •	P6100-2010-38	Retaining Ring •	P6100-0034-52	Retaining Ring (RTW-28)
P6100-0034-11	Button (2)	P6100-2010-25	Anvil Bushing	P6100-0034-39	Gasket ○	P6100-2010-53	Inverted Retaining Ring (ISTW-30)
P6100-0034-12	Screw (2) - (M3 x 8)	P6100-0034-26	Oil Cap (1/8")	P6100-0034-40	Screw (2)	P6100-2010-55	• Service Kit
P6100-0034-13	Ball Bearing (6001)	P6100-0034-27	Spring Pin (2 x 5)	P6100-0034-41	O-Ring (20,35 x 1,78) •	P6100-0034-56	○ Rebuilt Kit
P6100-0034-14	Fixed Ring	P6100-0034-28	Hammer Case	P6100-0034-42	Valve Spring •		
P6100-0034-15	Rotor	P6100-0034-29	Gasket ○	P6100-0034-43	Valve Stem		

TECHNICAL SPECIFICATION

PRODUCT TYPE 1" professional impact wrench		MODEL: 6100-2010
SQUARE DRIVE: 1"	WORKING TORQUE RANGE: 271-1.627 Nm (200-1.200 ft-lbs)	AIR PRESSURE: 6,2 Bar (90 P.S.I.)
FREE SPEED: 5.500 RPM	AIR INLET: 3/8" NPT	AVERAGE AIR CONSUMPTION: 226 L/Min (8 CFM)
MAX. TORQUE: 2.034 Nm (1.500 ft-lbs)	HOSE SIZE: 1/2" (13 mm)	WEIGHT: 3,4 Kg

