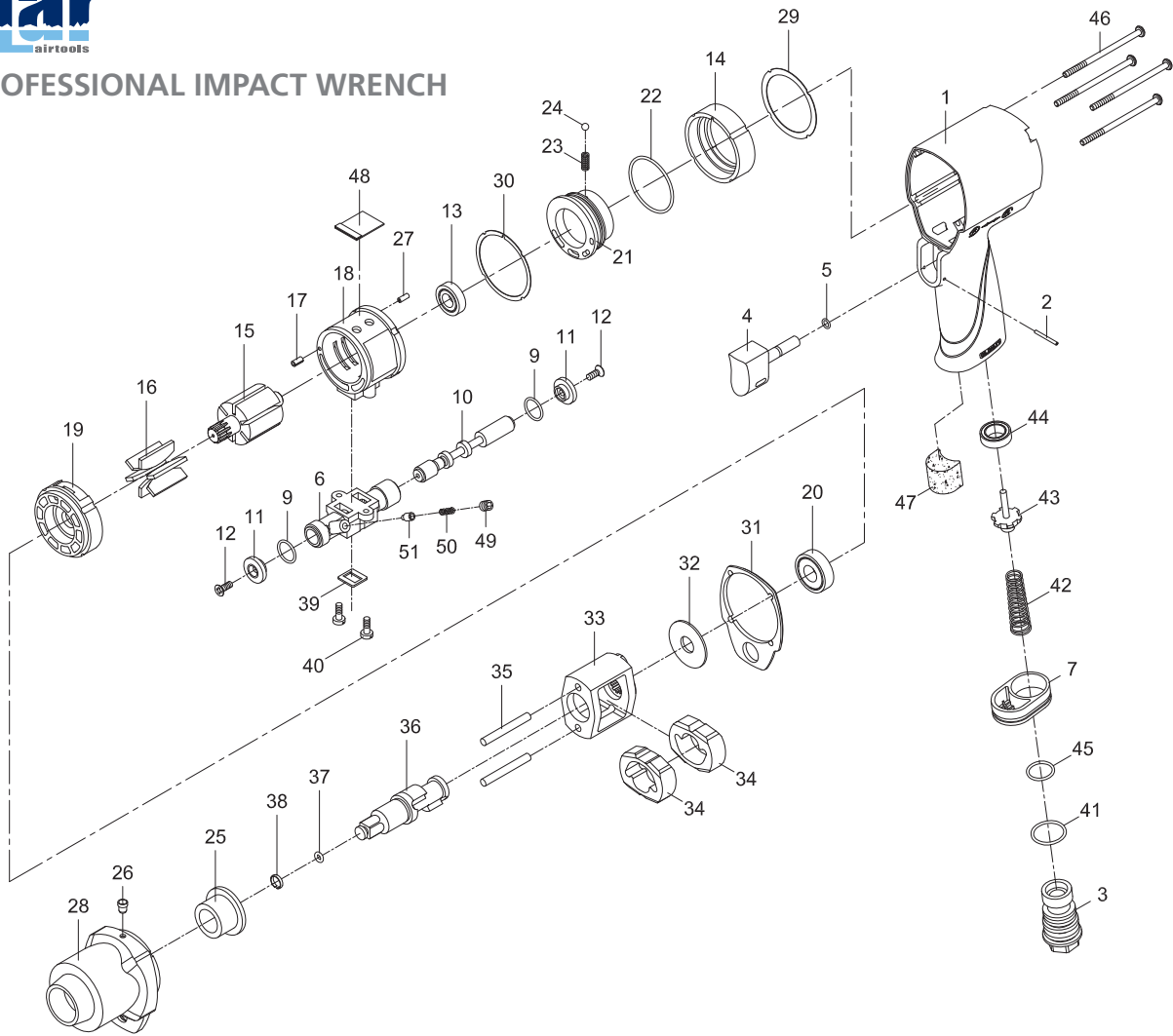




3/8" PROFESSIONAL IMPACT WRENCH



PARTS NO.	DESCRIPTION	PARTS NO.	DESCRIPTION	PARTS NO.	DESCRIPTION
P6100-0038-01	Motor Housing	P6100-0038-20	Ball Bearing (6001ZZ)	P6100-0038-38	Retaining Ring
P6100-0038-02	Spring Pin (2 x 20)	P6100-0038-21	Air Regulator	P6100-0038-39	Gasket
P6100-0038-03	Air Inlet	P6100-0038-22	O-Ring (34,65 x 1,78) ●	P6100-0038-40	Screw (2)
P6100-2012-04	Trigger	P6100-0038-23	Spring	P6100-0038-41	O-Ring (20,35 x 1,78)
P6100-2012-05	O-Ring (4 x 1) ●	P6100-0038-24	Steel Ball (9/64") ●	P6100-0038-42	Valve Spring
P6100-0038-06	Reverse Valve	P6100-0038-25	Anvil Bushing	P6100-0038-43	Valve Stem
P6100-0038-07	Exhaust Diffuser	P6100-0038-26	Oil Cap (1/8")	P6100-0038-44	Rubber Spacer
P6100-0038-09	O-Ring (2) - (11,4 x 1,25) ●	P6100-0038-27	Spring Pin (2 x 5)	P6100-0038-45	O-Ring (15,7 x 1,7)
P6100-0038-10	Reverse Stem	P6100-0038-28	Hammer Case	P6100-0038-46	Screw (4)
P6100-0038-11	Button (2)	P6100-0038-29	Gasket	P6100-0038-47	Muffler Material
P6100-0038-12	Screw (2) - (M3 x 8)	P6100-0038-30	Gasket	P6100-0038-48	Muffler Material
P6100-0038-13	Ball Bearing (6900ZZ)	P6100-0038-31	Gasket	P6100-0038-49	Set Screw (M4 x 6)
P6100-0038-14	Fixed Ring	P6100-0038-32	Washer	P6100-0038-50	Spring
P6100-0038-15	Rotor	P6100-0038-33	Hammer Cage	P6100-0038-51	Pin
P6100-0038-16	Rotor Blade (6) ●	P6100-0038-34	Hammer (2)	P6100-0038-55	● Service Kit
P6100-0038-17	Spring Pin (2,5 x 5)	P6100-0038-35	Hammer Pin (2) ○	P6100-0038-56	○ Rebuilt Kit
P6100-0038-18	Cylinder	P6100-0038-36	Anvil (RH-Type 3/8") ○		
P6100-0038-19	Front End Plate	P6100-0038-37	O-Ring (3,8 x 1,9) ●		

TECHNICAL SPECIFICATION

PRODUCT TYPE		MODEL: 6100-0038
3/8" professional impact wrench		
SQUARE DRIVE: 3/8" (10 mm)	WORKING TORQUE RANGE: 34-338 Nm (25-250 ft-lbs)	AIR PRESSURE: 6,2 Bar (90 P.S.I.)
FREE SPEED: 11.000 RPM	AIR INLET: 1/4" NPT	AVERAGE AIR CONSUMPTION: 113 L/Min (4 CFM)
MAX. TORQUE: 430 Nm (583 ft-lbs)	HOSE SIZE: 3/8" (10 mm)	WEIGHT: 1,2 Kg

