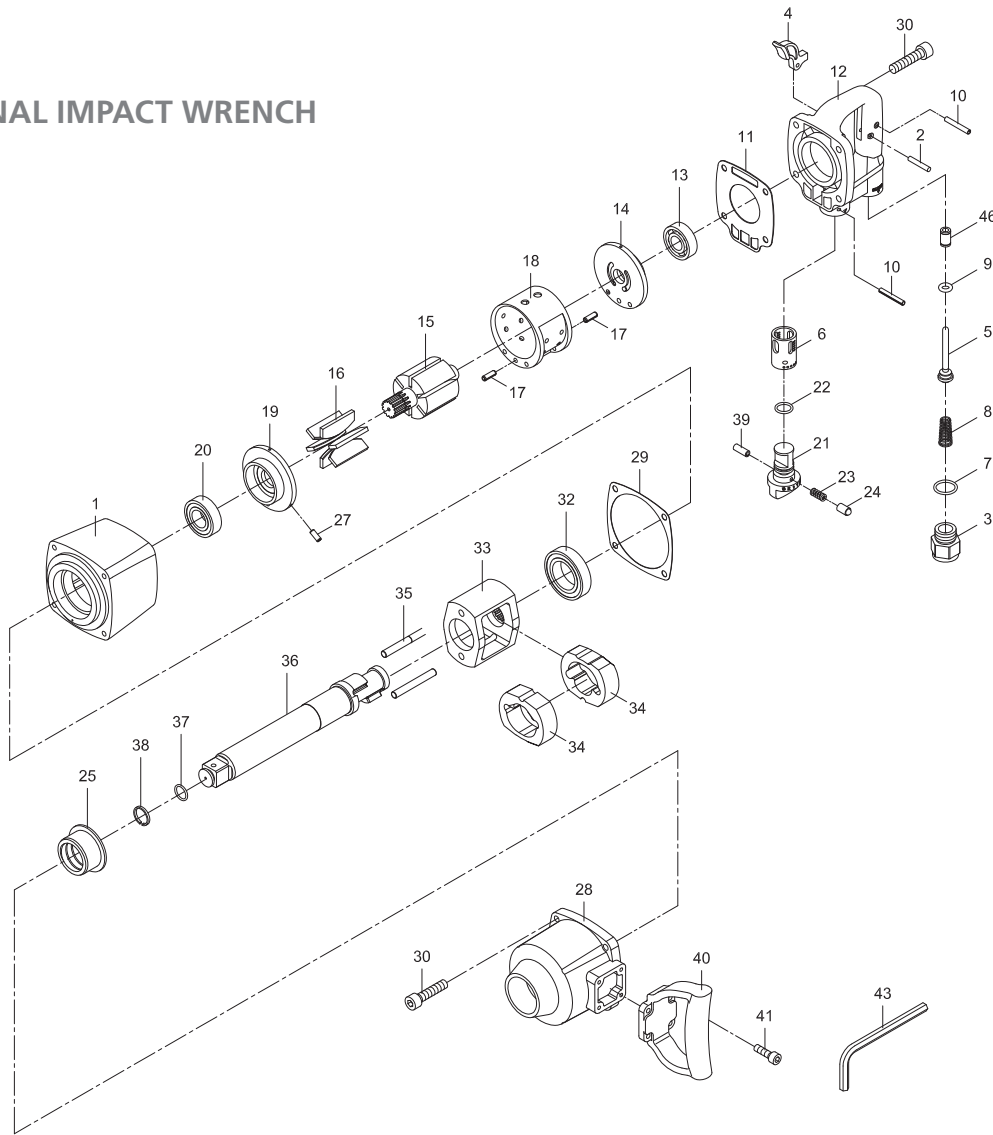




1" PROFESSIONAL IMPACT WRENCH



PARTS NO. DESCRIPTION

P6100-0010-01	Motor Housing	P6100-0010-16	Rotor Blade (6) ●	P6100-0010-33	Hammer Cage
P6100-0010-02	Pin (4 x 23,8)	P6100-0010-17	Spring Pin (2) - (6 x 18)	P6100-0010-34	Hammer (2)
P6100-0010-03	Air Inlet	P6100-0010-18	Cylinder	P6100-0010-35	Hammer Pin (2) ○
P6100-0010-04	Trigger	P6100-0010-19	Front End Plate	P6100-1010-36	Anvil (1" L = 8")
P6100-0010-05	Valve Stem	P6100-0010-20	Ball Bearing (6205Z) ○	P6100-0010-37	O-Ring (17,8 x 2,4) ●
P6100-0010-06	Reverse Valve Bushing	P6100-0010-21	Air Regulator	P6100-0010-38	Retainer Ring ●
P6100-0010-07 ●	O-Ring (19,8 x 2,4)	P6100-0010-22	O-Ring (16,8 x 2,4) ●	P6100-0010-39	Spring Ring (3 x 8)
P6100-0010-08	Valve Spring	P6100-0010-23	Spring ●	P6100-0010-40	Dead Handle
P6100-0010-09 ●	O-Ring (7,5 x 3,5 HS90)	P6100-0010-24	Pin	P6100-0010-41	Screw (4) - (M6 x 20)
P6100-0010-10	Spring Pin (2) - (4 x 28)	P6100-0010-25	Anvil Bushing	P6100-0010-43	Hex. Key Wrench (5)
P6100-0010-11	Gasket ○	P6100-0010-27	Spring Pin (4 x 10)	P6100-0010-46	Valve Bushing
P6100-0010-12	Rear Cover	P6100-0010-28	Hammer Case	P6100-0010-50	● Service Kit
P6100-0010-13	Ball Bearing (6204) ○	P6100-0010-29	Gasket ○	P6100-0010-51	○ Rebuilt Kit
P6100-0010-14	Rear End Plate	P6100-0010-30	Screw (8) - (M8 x 35)		
P6100-0010-15	Rotor	P6100-0010-32	Ball Bearing (6008Z)		

TECHNICAL SPECIFICATION

PRODUCT TYPE 1" professional impact wrench		MODEL: 6100-1010
SQUARE DRIVE: 1"	WORKING TORQUE RANGE: 542-2,441 Nm (400-1.800 ft-lbs)	AIR PRESSURE: 6,2 Bar (90 P.S.I.)
FREE SPEED: 5.000 RPM	AIR INLET: 1/2" NPT	AVERAGE AIR CONSUMPTION: 282 L/Min (10 CFM)
MAX. TORQUE: 3,119 Nm (2.300 ft-lbs)	HOSE SIZE: 1/2" (13 mm)	WEIGHT: 11 Kg

