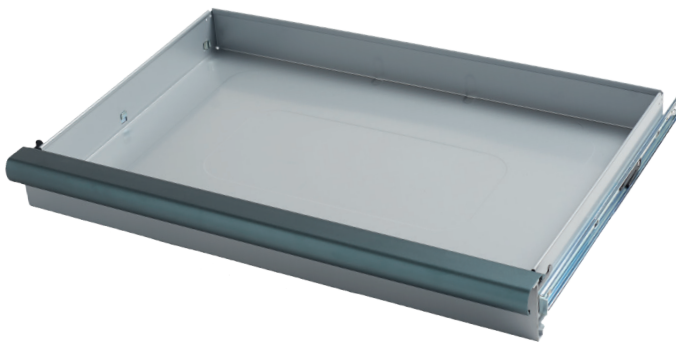


INSTALLATION INSTRUCTIONS

HOW TO INSTALL DIVIDERS AND DRAWERS IN **EASY AND X-LARGE ROLLER CABINETS**

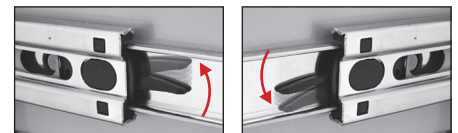
NOTE! IF YOU ONLY NEED TO REMOVE THE DRAWERS - LEAVE OUT NOTE 5 AND 6



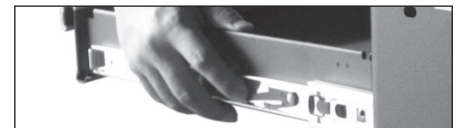
DISMOUNTING THE CSS BALL BEARING SLIDES:

OPEN THE DRAWER COMPLETELY.

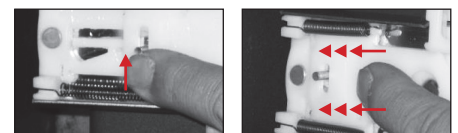
1. SIMULTANEOUSLY PUSH THE RELEASE LEVERS ON THE BALL BEARING SLIDES: LEFT GOES UP - RIGHT GOES DOWN.



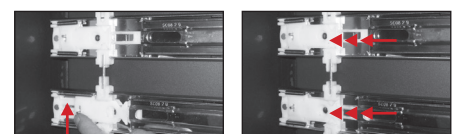
2. PULL THE DRAWER OUT. OBSERVE THE ORIGINAL PIN POSITION ON THE SLIDE AFTER YOU PULL THE DRAWER OUT.



3. PRESS THE RIGHT PIN UPWARDS. YOU WILL SEE THE PLASTIC SHEET MOVE TO THE LEFT SIDE AUTOMATICALLY.



4. REPEAT THE SAME STEP FOR THE REMAINING BALL BEARING SLIDES.



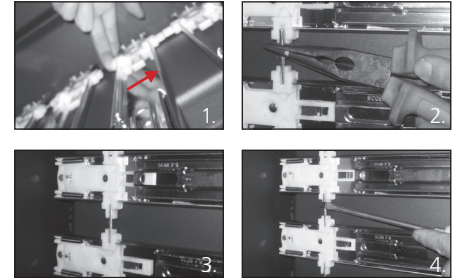
5. MOVE THE PLASTIC SHEET UPWARDS, IN ORDER TO TAKE OUT THE IRON BAR. YOU CAN NOW REMOVE THE BALL BEARING BY REMOVING THE RIVET.



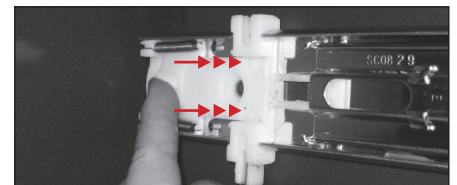


MOUNTING THE CSS BALL BEARING SLIDES:

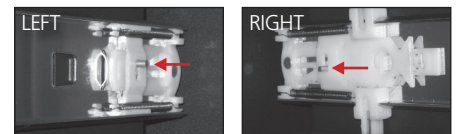
6. PUT BACK THE IRON BAR INTO THE PLASTIC SHEET. PLEASE NOTE THAT YOU NEED TO MOVE UP THE PLASTIC SHEET, SO THAT THERE IS ENOUGH SPACE FOR THE IRON BAR.



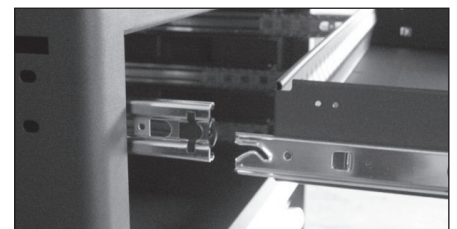
7. PUSH THE PLASTIC SHEET TOWARDS THE FRONT OF THE TROLLEY.
IMPORTANT: DO THIS ONLY FOR THE RIGHT SIDE.



8. CHECK THE PIN POSITION ON THE LEFT AND RIGHT SIDE.



9. REPLACE THE DRAWER:
MAKE SURE THAT SLIDES ARE 100% EXTRACTED.
CAREFULLY INSERT THE DRAWER SLIDES.



10. **IMPORTANT:** MAKE SURE THE BALL BEARINGS STAYS IN THE SLIDES.

11. PUSH UNTIL YOU HEAR THE CLICK INDICATING THAT THE SLIDES HAVE RE-ENGAGED.

