

OPERATING INSTRUCTIONS

PRODUCT TYPE

2- & 3-ARM COMBI PULLERS

MODELS

8458-0125

8458-0175

8458-0240

8458-0290



1. Make sure that the spindle is perfectly cleaned and greased.
2. Check that the shaft is punched. Otherwise use a point protector.
3. See that arms are evenly spread.
4. Put the force extraction by turning the spindle. Do not hit the spindle.
5. Do not maintain the spindle out of the body too much time.
6. Wear all necessary safety equipments.

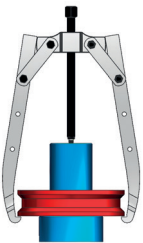
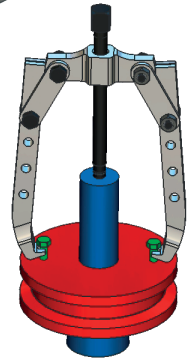


Figure 1

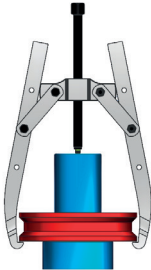


Figure 2

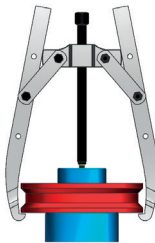


Figure 3

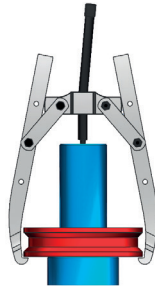


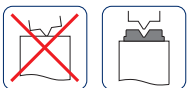
Figure 4

This series of puller can mount standard arms and long arms.

The puller has more force when arms are set in the lowest holes. In this position arm bend less when applying great force (Figure 1).

But if the spindle sticks out too much from the body it might bend when using the wrench (Figure 4).

This type of bending might lead to the catching of the spindle. Chose cautiously the position of the arms.



Note:

If the shaft doesn't have a centre hole, use a point protector in order to prevent possible damage for the shaft and the puller.