

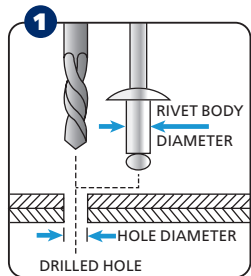
INSTRUCTION MANUAL

PRODUCT TYPE
HAND RIVET TOOL

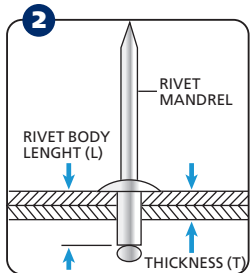
MODEL
9650-0050



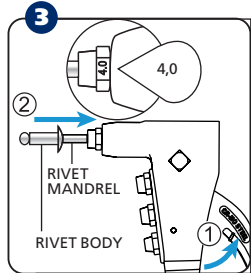
OPERATING INSTRUCTIONS



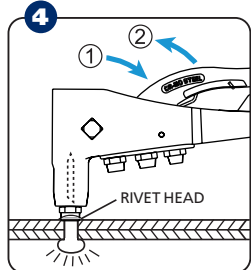
1. Select appropriate blind rivet for application, punch or drill same size or a little bigger (0,1 mm, 0,004") hole through the materials to be fastened.



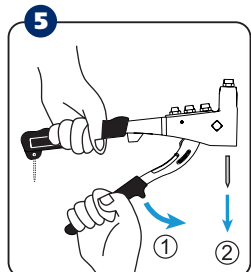
2. Select rivet body length (L) based on the combined thickness (T) of materials to be fastened. Suggested L-T \geq 4,0 mm or 0,16".



3. Open upper handle fully ①, choose same marked size nosepiece, for example 4,0 mm and screw into working nose and insert rivet mandrel all the way into working nosepiece ②.

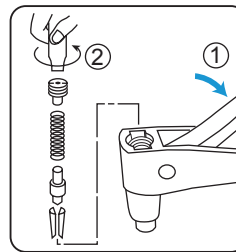


4. Insert rivet body into the prepared hole completely, press working nosepiece to touch rivet head. Squeeze upper handle ① until rivet mandrel breaks off and materials are well fastened. If more than one squeeze is required, open upper handle fully and squeeze again ②.

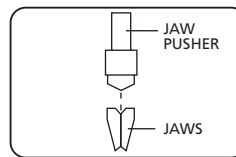


5. Finally open upper handle fully ① to eject spent mandrel ② from tool, either from working nosepiece or from upper side.

HOW TO CHANGE PARTS



1. Close tool handles completely ①.
2. Remove retaining screw with wrench ②, then remove jaw pusher spring, jaw pusher and jaws from jaw case.
3. Clean or replace jaws, lubricating outside of jaws with light machine oil before re-assembly.



4. Reverse the above steps to reassemble, making sure that the bevelled end of jaw pusher fits into the bevel provided by the jaws.

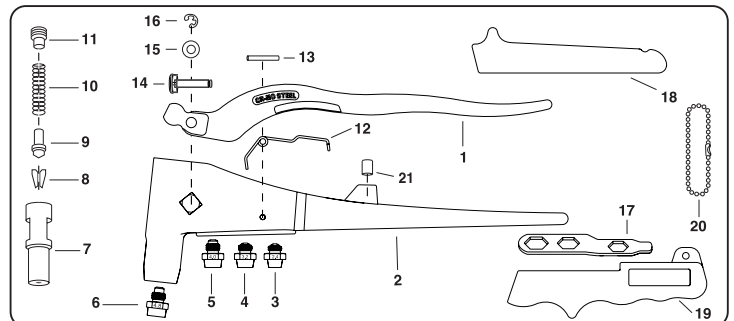
RIVET CAPACITY

Ø 2,4 – 3,2 – 4,0 and 4,8/5,0 mm (aluminium, steel and stainless steel).



- For safety work, always wear safety goggles.
- Tool must be clear off all spent mandrels before setting next blind rivet.
- Keep all moving parts oiled.

SPAREPARTS



NO.	PART NAME	ITEM NO.	NO.	PART NAME	ITEM NO.
1.	Upper handle	P9650-0050-1	12.	Torsion spring	P9650-0050-12
2.	Aluminum body	P9650-0050-2	13.	Torsion spring pin	P9650-0050-13
3.	Nosepiece, 2.4 mm	P9650-0050-3 •	14.	Fulcrum pin	P9650-0050-14
4.	Nosepiece, 3.0/3.2 mm	P9650-0050-4 •	15.	Fulcrum pin bearing	P9650-0050-15
5.	Nosepiece, 4.0 mm	P9650-0050-5 •	16.	Snap ring	P9650-0050-16 •
6.	Nosepiece, 4.8/5.0 mm	P9650-0050-6 •	17.	Wrench	P9650-0050-17 •
7.	Jaw case	P9650-0050-7	18.	Upper grip	P9650-0050-18
8.	Jaws (2-pc type)	P9650-0050-8 •	19.	Lower grip	P9650-0050-19
9.	Jaw pusher	P9650-0050-9 •	20.	Bead chain lock	P9650-0050-20 •
10.	Jaw pusher spring	P9650-0050-10 •	21.	Shock absorber	P9650-0050-21
11.	Retaining screw	P9650-0050-11 •			

• wearing parts