

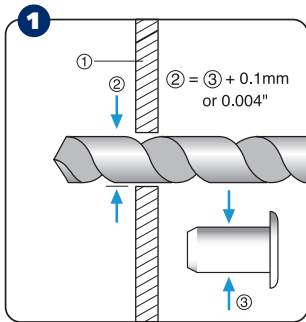
INSTRUCTION MANUAL

PRODUCT TYPE
HAND RIVET NUT TOOL

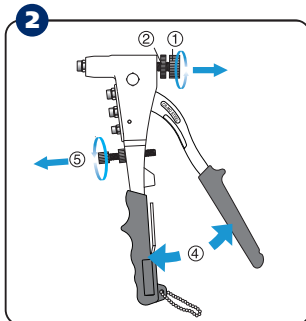
MODEL
9660-0306



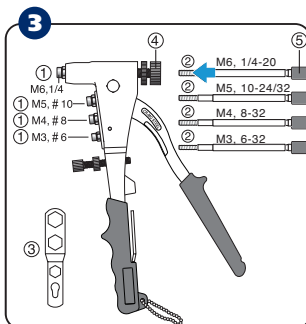
OPERATING INSTRUCTIONS



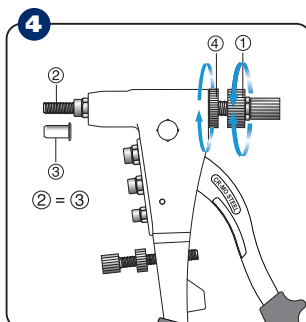
Drill a hole on workpiece ①, hole diameter ② should be 0.1 mm or 0.004" larger than rivet nut diameter ③.



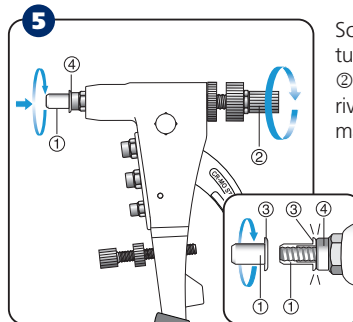
Still lock tool handles, turn up adjusting knob ① and lock nut ②, then loose bead chain lock ③ to open tool handles fully ④, and turn down the stroke bolt and stroke nut ⑤ to the lowest position.



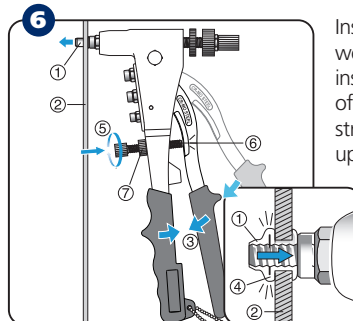
Select nosepiece ① and threaded mandrel ② to be same size as rivet nut thread size, exchange nosepieces ③ by wrench ④, and insert threaded mandrel ② into adjusting knob ④ until threaded mandrel knob ⑤ touches adjusting knob ④.



Rotate adjusting knob ① to adjust thread length ② of threaded mandrel to be same as rivet nut length ③, then turn down the lock nut ④ to lock adjusting knob ① position firmly.



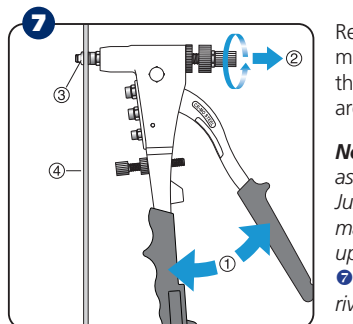
Screw the rivet nut ① onto threaded mandrel by turning either rivet nut ① or threaded mandrel knob ② until rivet nut head ③ touches nosepiece ④. The rivet nut end should be flush with the threaded mandrel end.



Insert the screwed rivet nut ① into the drilled hole of workpiece ②, squeeze tool handles ③ until rivet nut is installed firmly by forming a bulge ④ against the back of workpiece ②; still hold tool handles ③ and adjust stroke bolt ⑤ up to touch upper handle ⑥, then turn up stroke nut ⑦ to lock stroke bolt ⑤ position.

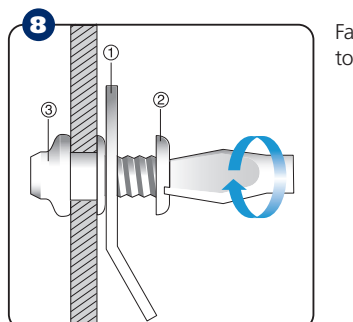
Now the proper stroke is built up to protect the rivet nut thread and this rivet nut tool as well.

Note: A proper stroke ensures rivet nut thread to be installed securely, so a pilot test is always recommended before installing different sizes of rivet nut.



Release tool handles fully ① and rotate threaded mandrel knob ② to unscrew threaded mandrel from the installed rivet nut ③. Now the rivet nut thread are built up securely in the workpiece ④.

Note: If the next fastening rivet nut is the same size as the previous one, do not need any adjustment! Just repeat point ⑤ to screw rivet nut onto threaded mandrel, squeeze tool handles to set rivet nut until upper handle touches stroke bolt, finally follow point ⑦ to unscrew threaded mandrel from the installed rivet nut.

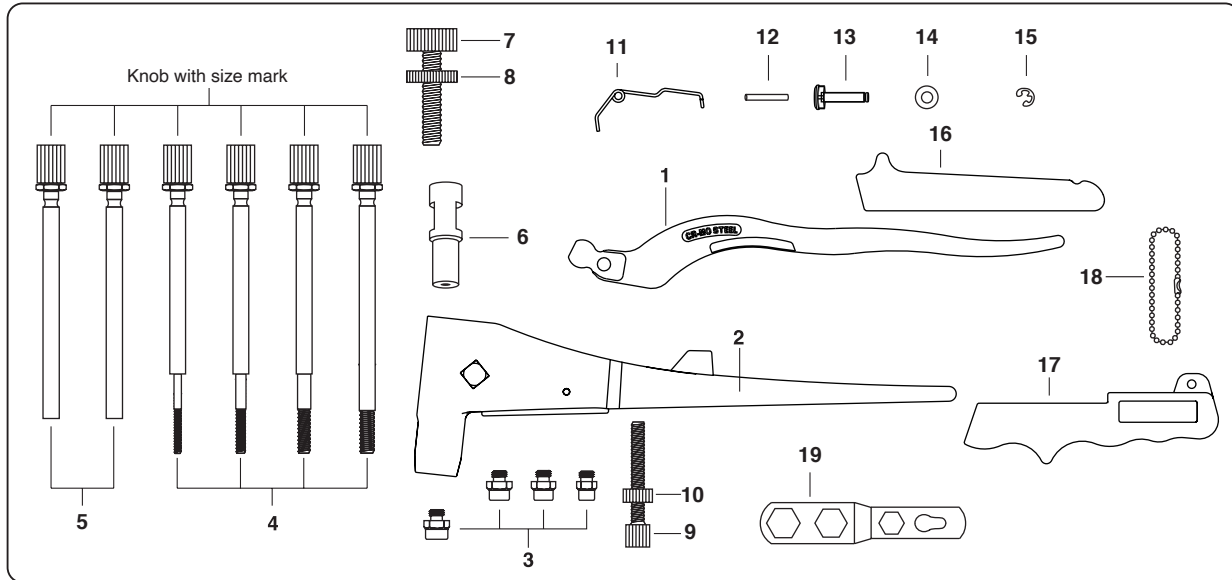


Fasten an object ① by screwing a bolt or a screw ② to the installed rivet nut ③.

RIVET CAPACITY

M3 – M4 – M5 (aluminium, steel and stainless steel). M6 (aluminium and steel).

SPAREPARTS



NO. PART NAME

1. Upper handle
2. Aluminum body
3. Nosepiece, for M3 rivet nut
Nosepiece, for M4 rivet nut or rivet bolt/stud
Nosepiece, for M5 rivet nut or rivet bolt/stud
Nosepiece, for M6 rivet nut
4. Threaded mandrel, for M3 x 0,5 rivet nut
Threaded mandrel, for M4 x 0,7 rivet nut
Threaded mandrel, for M5 x 0,8 rivet nut
Threaded mandrel, for M6 x 1,0 rivet nut
5. Threaded socket, for M4 x 0,7 rivet bolt/stud (option)
Threaded socket, for M5 x 0,8 rivet bolt/stud (option)
6. Collet case

ITEM NO.

- P9660-0306-1
P9660-0306-2
P9660-0306-3M3 •
P9660-0306-3M4 •
P9660-0306-3M5 •
P9660-0306-3M6 •
P9660-0306-4M3 •
P9660-0306-4M4 •
P9660-0306-4M5 •
P9660-0306-4M6 •
P9660-0306-5M4 •
P9660-0306-5M5 •
P9660-0306-6

NO. PART NAME

7. Adjusting knob
8. Lock nut
9. Stroke bolt
10. Stroke nut
11. Torsion spring
12. Torsion spring pin
13. Fulcrum pin
14. Fulcrum pin bearing
15. Snap ring
16. Upper grip
17. Lower grip
18. Bead chain lock
19. Wrench

ITEM NO.

- P9660-0306-7
P9660-0306-8
P9660-0306-9
P9660-0306-10
P9660-0306-11
P9660-0306-12
P9660-0306-13
P9660-0306-14
P9660-0306-15
P9660-0306-16
P9660-0306-17
P9660-0306-18
P9660-0306-19 •

• wearing parts

REMARKS

1. The hand rivet nut tool can set both rivet nuts and rivet bolts/studs.
Threaded mandrels (no. 4) are for rivet nuts, threaded sockets (no. 5) are for rivet bolts/studs.
2. Each nosepiece can set same size of rivet nut and rivet bolt/stud.
For example, nosepiece for M5 rivet nut can match threaded mandrel for M5 x 0,8 rivet nut or threaded socket for M5 x 0,8 rivet bolt/stud.