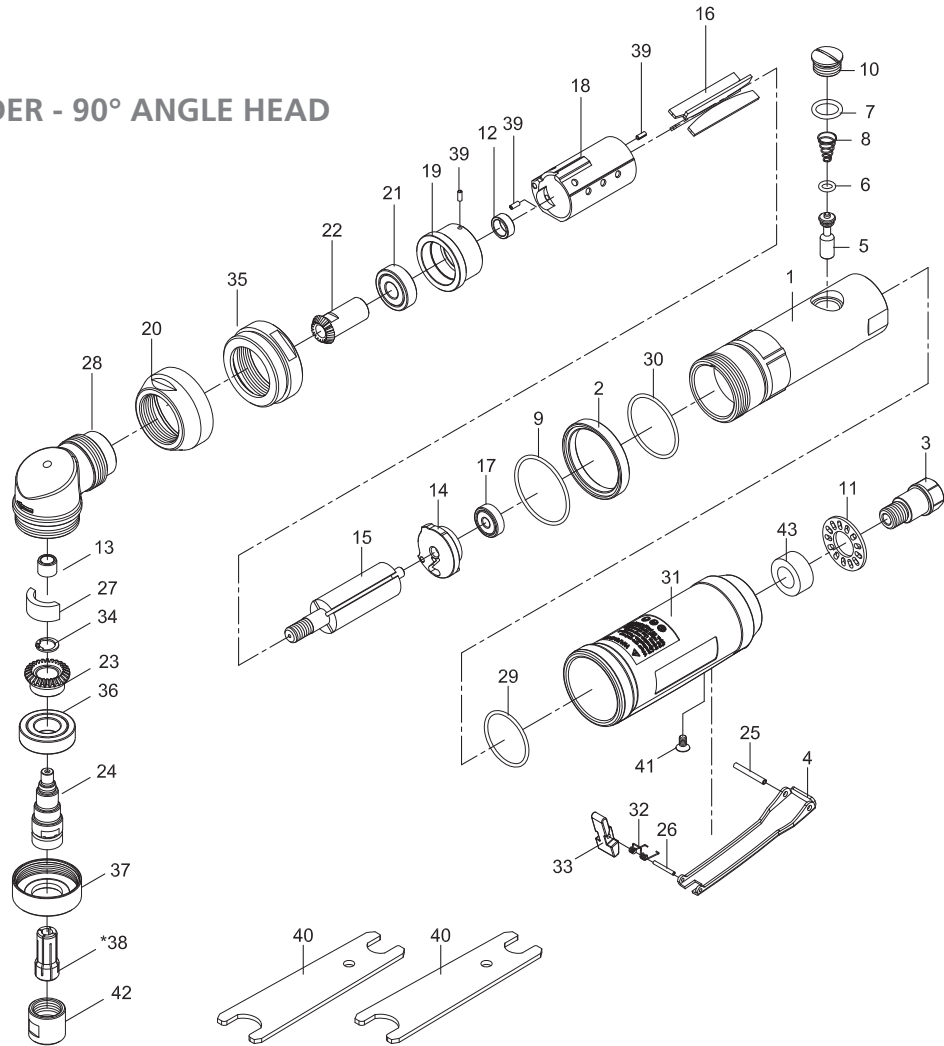




## INDUSTRIAL DIE GRINDER - 90° ANGLE HEAD



PARTS NO.	DESCRIPTION	PARTS NO.	DESCRIPTION	PARTS NO.	DESCRIPTION
P6110-1000-01	Motor Housing	P6110-1000-17	Ball Bearing (626zz)	P6110-1000-28	Safety bar
P6110-1000-02	Decoration Ring	P6110-1090-18	Cylinder ◯	P6110-1090-28	Front Housing
P6110-1000-03	Air Inlet	P6110-1090-19	Front End Plate	P6110-1000-29	O-Ring (Ø 31.5 x Ø2) ●
P6110-1000-04	Throttle Lever	P6110-1090-20	Connector Nut	P6110-1000-30	O-Ring (Ø 35.5 x Ø2) ●
P6110-1000-05	Valve Shaft	P6110-1000-20	Spring Pin (3) - Ø 2.5x6L ●	P6110-1000-31	Grip
P6110-1000-06	O-Ring (Ø 4.8 x Ø 1.9) ●	P6110-1000-21	Ball Bearing (6000zz)	P6110-1000-32	Spanner (2) - 14 mm, 19 mm
P6110-1000-07	O-Ring (Ø 11.8 x 2.4) ●	P6110-1090-22	Bevel Gear	P6110-1000-33	Screw (M4 x 8L)
P6110-1000-08	Spring ●	P6110-1000-23B	Collet (6 mm) ◯	P6110-1090-34	Snap Ring (ISTW-10)
P6110-1000-09	O-Ring (Ø 40 x Ø2) ●	P6110-1000-23C	Collet (8 mm) ◯	P6110-1090-35	Clamp Nut
P6110-1000-10	Plug	P6110-1090-23	Bevel Gear	P6110-1090-36	Ball Bearing (6002zz)
P6110-1000-11	Diffuser	P6110-1000-24	Collet Nut	P6110-1090-37	Clamp Nut
P6110-1000-12	Rotor Bushing ◯	P6110-1090-24	Spindle	P6110-1090-43	Muffler
P6110-1090-13	Needle Bearing	P6110-1000-25	Spring Pin (Ø 3 x 24L)		
P6110-1000-14	Rear End Plate	P6110-1000-26	Spring Pin (Ø 2 x 16L)	P6110-1000-50	● Service Kit
P6110-1000-15	Rotor	P6110-1000-27	Spring	P6110-1090-51	○ Rebuilt Kit
P6110-1000-16	Rotor Blade (4) ●	P6110-1090-27	Felt Oiler		

### TECHNICAL SPECIFICATION

PRODUCT TYPE		MODEL: 6110-1090	
Die grinder - 90° angle head			
FREE SPEED	12.000 RPM	HOSE SIZE:	3/8" (10 mm)
		WEIGHT:	1.2 Kg
COLLET SIZE:	6 mm	AIR PRESSURE:	6,2 Bar (90 P.S.I.)
		HORSEPOWER:	1 HP
AIR INLET:	1/4" NPT	AVERAGE AIR CONSUMPTION:	150 L/Min (5.3 CFM)

