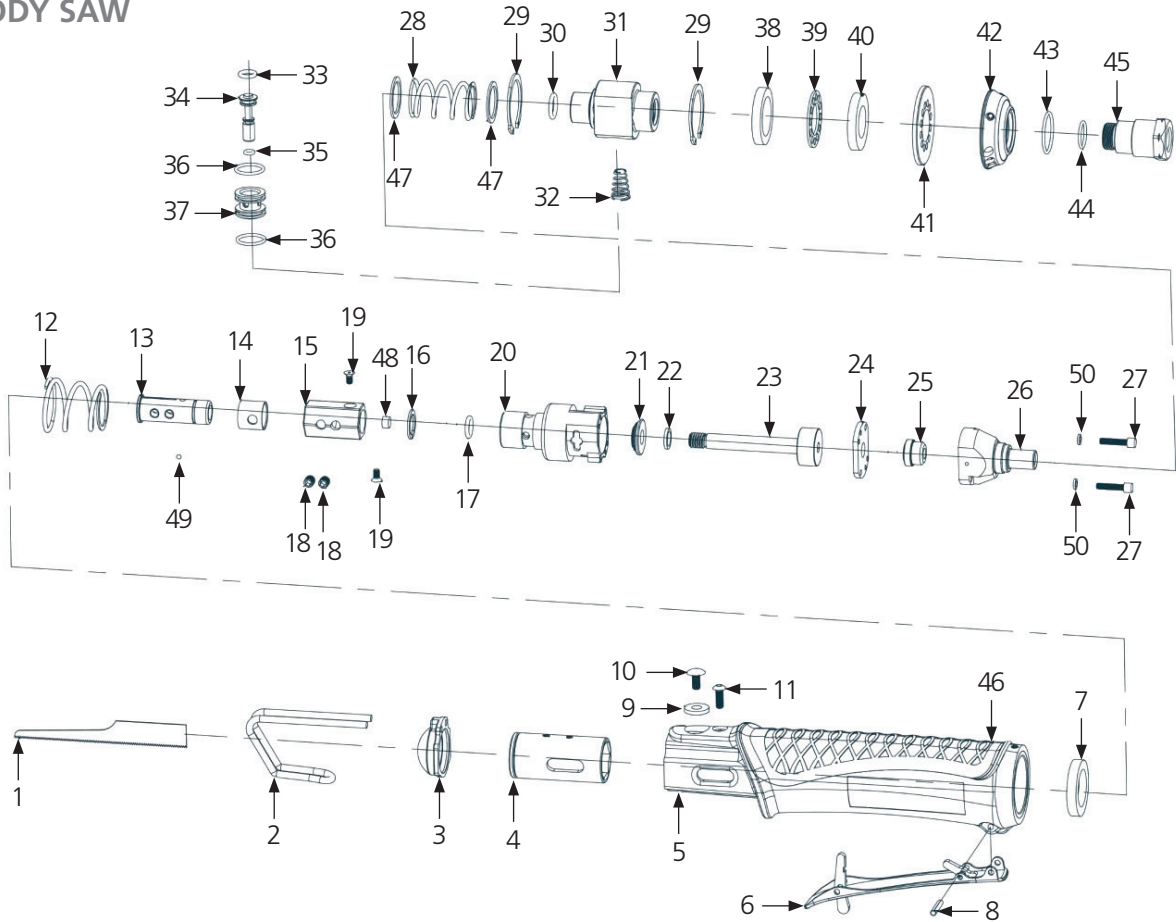




AIR BODY SAW



PARTS NO.	DESCRIPTION	PARTS NO.	DESCRIPTION	PARTS NO.	DESCRIPTION
P6165-0001-01A	Saw Blade (32T)	P6165-0001-18	Screw (2 pcs.) ●	P6165-0001-36	O-Ring (2 pcs.)
P6165-0001-01B	Saw Blade (24T)	P6165-0001-19	Screw (2 pcs.) ●	P6165-0001-37	Intake Sleeve
P6165-0001-02	Depth Regulator	P6165-0001-20	Cylinder ○	P6165-0001-38	Muffler
P6165-0001-03	Dust Proof	P6165-0001-21	Cushion ○	P6165-0001-39	Muffler Pad
P6165-0001-04	Hexagon Socket	P6165-0001-22	Rubber Mat ○	P6165-0001-40	Muffler
P6165-0001-05	Housing	P6165-0001-23	Piston ○	P6165-0001-41	Exhaust Pad
P6165-0001-06	Throttle Lever	P6165-0001-24	Board ○	P6165-0001-42	Exhaust Hood
P6165-0001-07	Oil Seal	P6165-0001-25	Valve ■	P6165-0001-43	O-Ring
P6165-0001-08	Hollow Pin	P6165-0001-26	Rear Cylinder ■	P6165-0001-44	O-Ring
P6165-0001-09	Gasket	P6165-0001-27	Screw (2 pcs.)	P6165-0001-45	Air Inlet
P6165-0001-10	Screw	P6165-0001-28	Spring	P6165-0001-46	Plastic Cover
P6165-0001-11	Screw	P6165-0001-29	C-type Buckle (2 pcs.)	P6165-0001-47	Iron Washer (2 pcs.)
P6165-0001-12	Spring	P6165-0001-30	O-Ring	P6165-0001-48	Plastic Steel ●
P6165-0001-13	Blade Chuck ●	P6165-0001-31	Air Intake	P6165-0001-49	Ball ●
P6165-0001-14	Casing ●	P6165-0001-32	Spring	P6165-0001-50	Safety Washer (2 pcs.)
P6165-0001-15	Hexagon Slide ●	P6165-0001-33	O-Ring	P6165-0001-60	● Blade Chuck Kit
P6165-0001-16	C-type Buckle ●	P6165-0001-34	Valve Stem	P6165-0001-61	○ Cylinder Kit
P6165-0001-17	O-Ring ○	P6165-0001-35	O-Ring	P6165-0001-62	■ Rear Cylinder Kit

TECHNICAL SPECIFICATION

PRODUCT TYPE		MODEL: 6165-0001
Air body saw - low vibration		
STROKE LENGTH 14 mm	AIR INLET: 1/4" NPT	AVERAGE AIR CONSUMPTION: 65 L/Min (2,3 CFM)
STROKES PR. MIN. 10.000 BPM	HOSE SIZE: 3/8" (10 mm)	WEIGHT: 0,6 Kg
VIBRATION LEVEL 5,45 m/s ²	AIR PRESSURE: 6,2 Bar (90 P.S.I.)	

