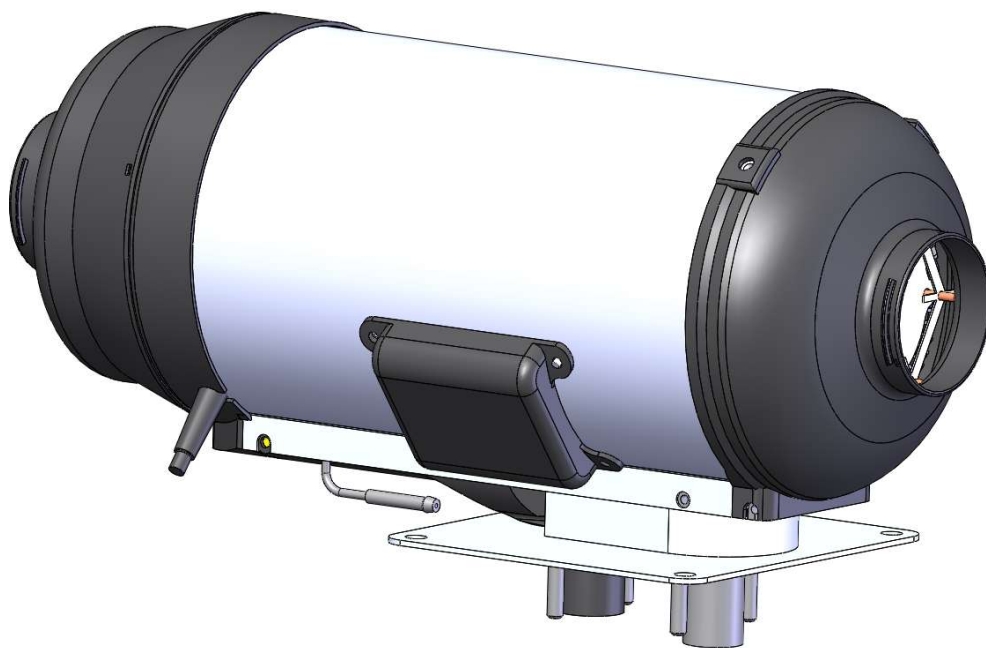


1.1.1 Service Manual		
Doc. no. : 01	Revision : Rev C	Page : 1 of 5
Author : MC	Approved by :	Rev. Date : 28/6-2024

Entiffic Air



Improper installation of the Entiffic Heating System can cause fire, leakage of harmful carbon monoxide leading to serious injury or death.

To install and maintain a Entiffic Heating System, professional expertise and technical documentation is necessary. Special tools and equipment may also be necessary.

NEVER try to install or maintain a Entiffic Heating System, without prior training and experience with the Entiffic heater series.

Carefully follow all instructions provided by Entiffic and this installation guide.

Entiffic rejects any liability for damage or problems caused by the product, if installed by untrained personnel or against the instructions provided in the installation guide.

1.1.1 Service Manual		
Doc. no. : 01	Revision : Rev C	Page : 2 of 5
Author : MC	Approved by :	Rev. Date : 28/6-2024

1 Table of Contents

1	Table of Contents.....	2
1	Software Service Mode.....	3
1.1	Enter Service Mode	3
1.2	Prime system with the pump while in service mode.....	3
1.3	Trim fuel/air ratio while in service mode.....	4
1.4	Exit Service Mode.....	5

1.1.1 Service Manual		
Doc. no. : 01	Revision : Rev C	Page : 3 of 5
Author : MC	Approved by :	Rev. Date : 28/6-2024

Valid for ENTIFFIC AIR, Software version 2.21 or higher

1 Software Service Mode

In service mode the following points is available without extra components:

- Run the pump manually. To prime fuel hoses and filter with fuel.
- Trim the air/fuel ratio for better burner performance

In service mode the following points is available with an additional service unit:

- Monitor sensor states inside unit:
 - Fin temperature
 - Burner temperature
 - Rum temperature
 - Generator voltage and current
 - Battery voltage
 - Trim Value
 - Fan speed
 - The latest 25 error codes
 - The current error code
 - Current state of the heater
- Data Log of the unit

1.1 Enter Service Mode

- To enter "Service Mode" follow below sequence.
 1. Disconnect power plug.
 2. Reconnect power plug. A 5 sec window starts to enter service mode.
 3. Push Fan button 1 once within the 5 sec window. This selects the service mode indicated with Yellow and Green LED ON.



1) Connect power



2) Push "Fan" within 5 sec



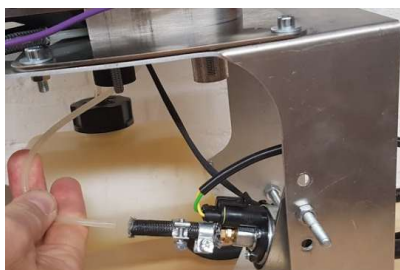
3) Green and Yellow indicates "Service mode"

1.2 Prime system with the pump while in service mode

- To prime the fuel hose follow below sequence. Note Service mode must be active.
 1. If needed disconnect fuelhose at the inlet on the heater and place outlet in separate container to avoid spilling of fuel

1.1.1 Service Manual		
Doc. no. : 01	Revision : Rev C	Page : 4 of 5
Author : MC	Approved by :	Rev. Date : 28/6-2024

2. Push "Heat" to start pump. The pump state is not indicated by LED states.
3. Push "Heat" to stop pump. The pump state is not indicated by LED states.



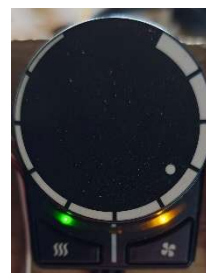
- 1) Disconnect fuel hose at heater
- 2) Place hose in container To avoid spilling
- 3 & 4) Press "Heat" to toggle pump mode

1.3 Trim fuel/air ratio while in service mode

Important: The heater has been trimmed for ideal operation at the factory. Contact supplier if information about the factory setting is required.

It is possible to trim heater in both OFF and ON modes.

- To Trim fuel/air ratio follow below sequence. "Service mode" must be active. Procedure is the same regardless if heater is OFF or ON while in service. Trimming is not possible during normal operation!
 - Important: If you trim with heater while OFF, pressing the heater button will start the pump at the same time. It is very important to stop the pump after trimming. Failure to stop the pump will flood the heater, causing malfunction, and potentially fuel will spill on the floor surrounding the heaters, causing risk of contamination and fire.
1. Adjust the knob to desired trim value. The higher value the more air is added to the burning process.
 2. Press and hold "Fan" button – then press heater button briefly, wait for the YELLOW led to blink once, then release HOLD "Heat" button, until YELLOW LED blinks once to confirm the new setting.



Trim 0

Trim 3

Trim 6

Trim 10

Trim 14

Trim 19

1.1.1 Service Manual

Doc. no. : 01	Revision : Rev C	Page : 5 of 5
Author : MC	Approved by :	Rev. Date : 28/6-2024



NB2: take care not to trim heater accidentally during fuel priming. If accidental retrim occurs, use a CO-measuring instrument to trim heater to the following values.

Oxygen O₂ : 6,7 – 8,6 %
CO: 20 – 100 ppm

2 Exit Service Mode

- To exit “service mode” disconnect power.



1) Disconnect power